



Southern Health-Santé Sud POPULATION STATISTICS



Together leading the way for a healthier tomorrow.

Contents

About This Report	2
2020 Population - Southern Health-Santé Sud	3
Zone 1 – Population 2020	4
Zone 2 – Population 2020	5
Zone 3 – Population 2020	6
Zone 4 – Population 2020	7
10 Year Population Growth (2010-2020)	8
Manitoba Service Delivery Organization (SDO) Comparisons	8
Age Group Comparisons	10
District and Municipal Population Change	11
Population Growth by Districts and Municipalities, 2010-2020	12
Indigenous Population	14
Map.....	15



About This Report

The population data shown in this report is based on records of residents actively registered with Manitoba Health as of June 1, 2020 and published by Manitoba Health and Seniors Care (<https://www.gov.mb.ca/health/population/>). This population database is considered a reliable and accurate estimate of population sizes, and is helpful for understanding trends and useful for health planning purposes.

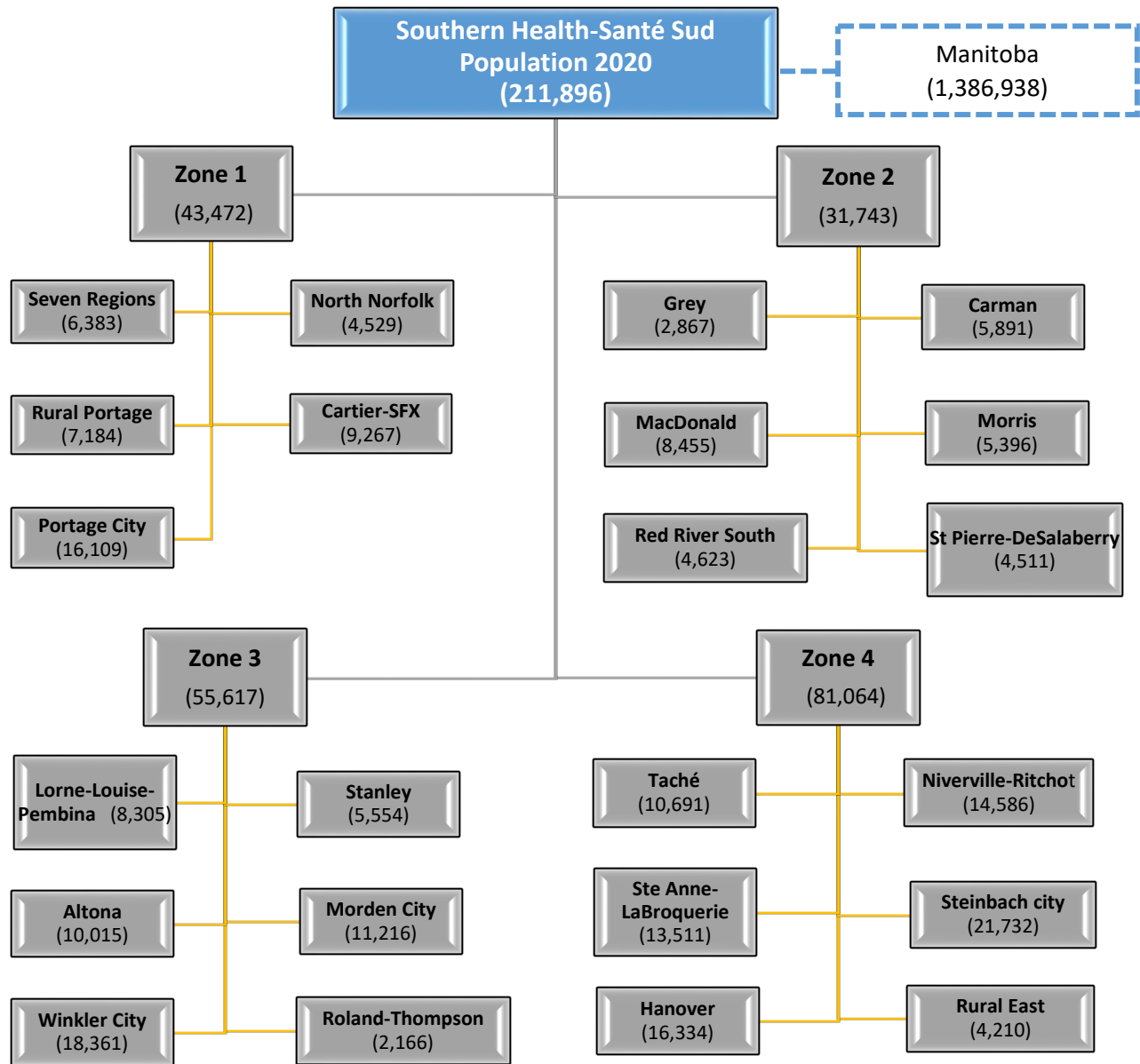
Label Change to Population Report

The population report is organized by four smaller geographies within Southern Health-Santé Sud. In previous reports this was referred to as “areas”, however going forward this will be referred to as “zones”.

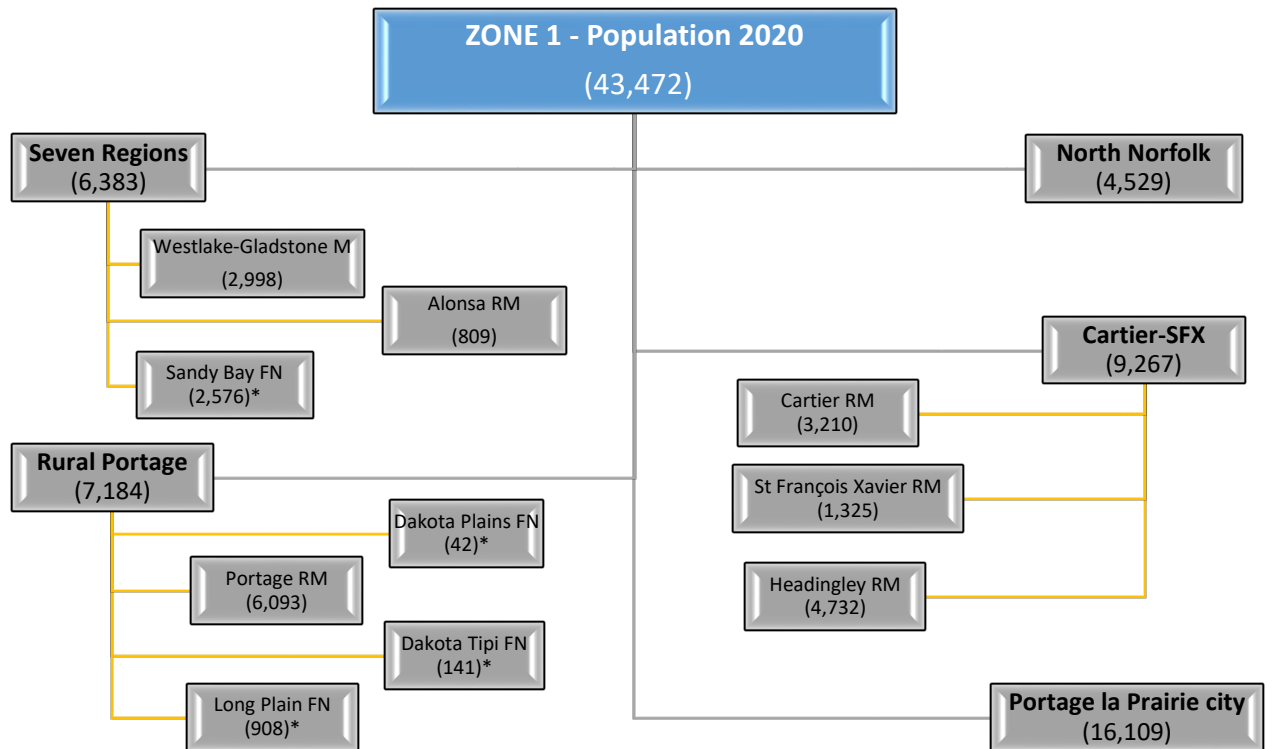
New Zone	Former Area
Zone 1	North area
Zone 2	Mid area
Zone 3	West area
Zone 4	East area



2020 Population - Southern Health-Santé Sud

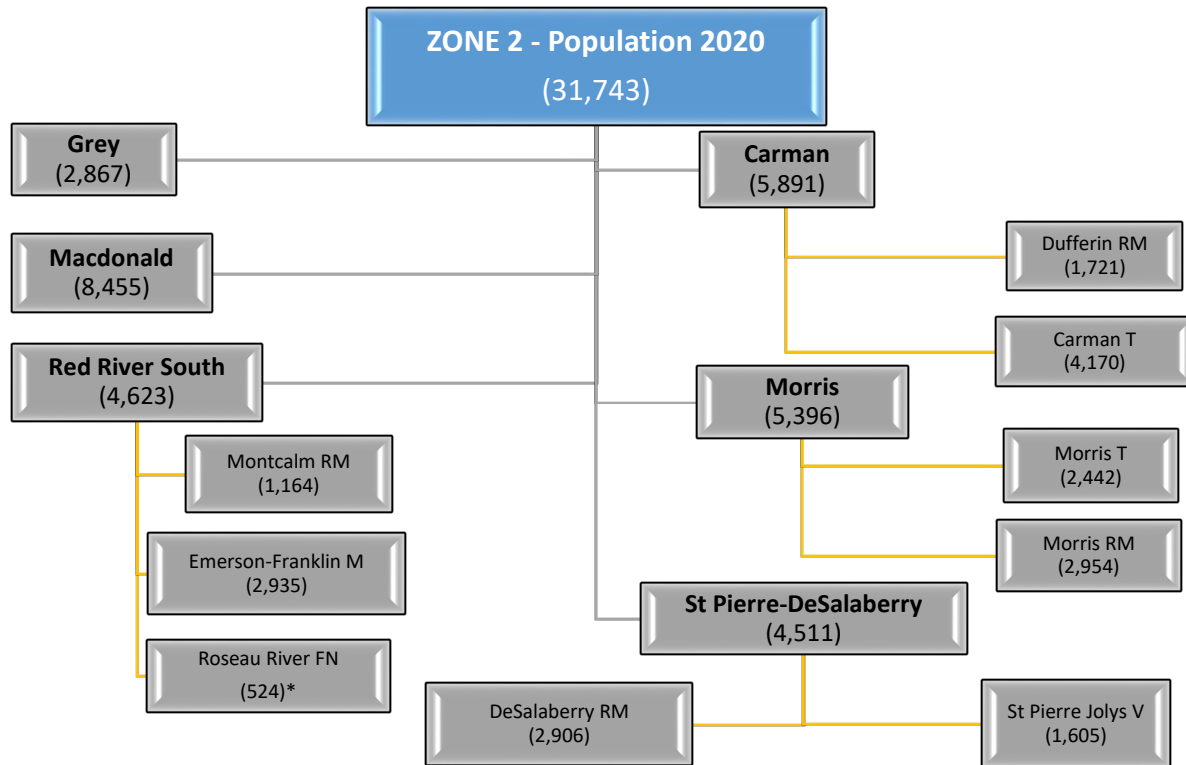


Zone 1 – Population 2020



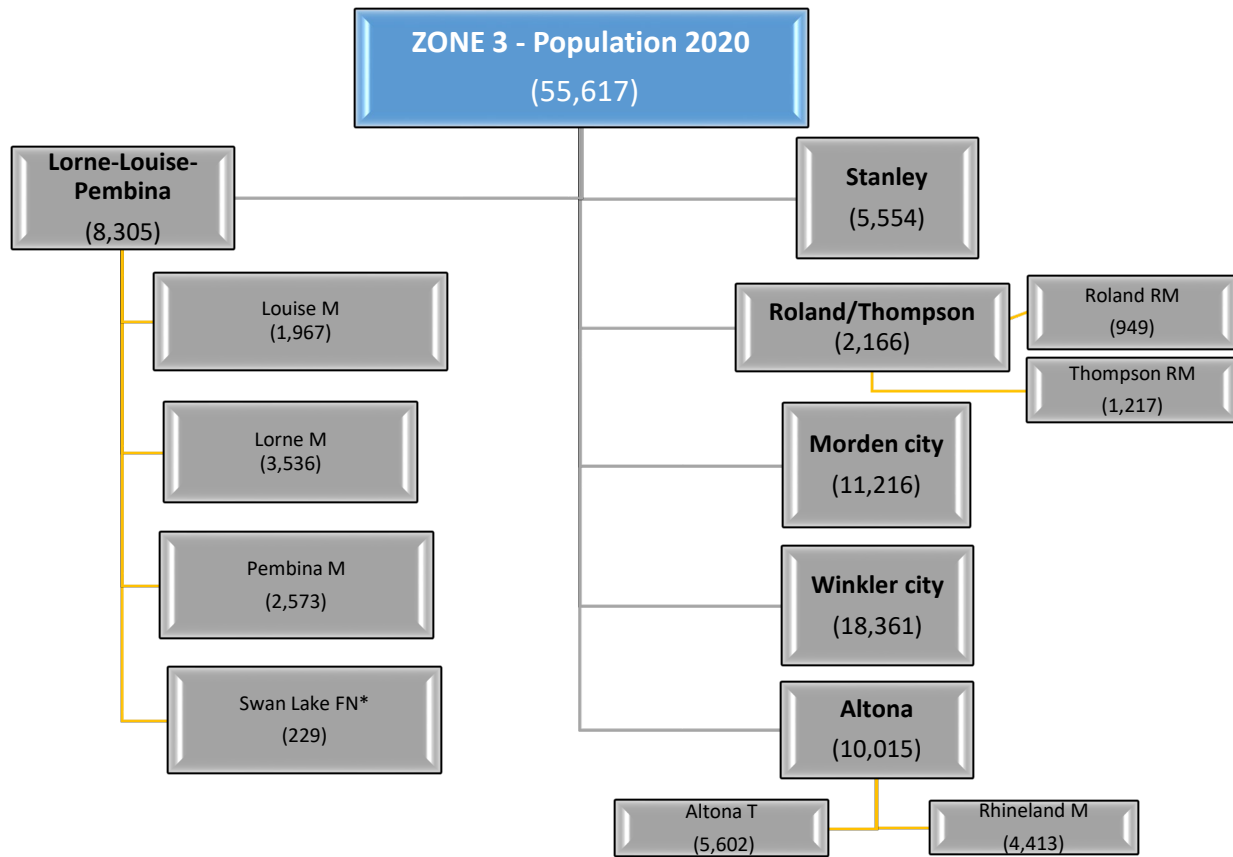
ZONE 1	2020	2019	Pop. Change	Percent Change
DISTRICT: Seven Regions	6,383	6,312	71	1.1 %
Westlake-Gladstone Municipality	2,998	2,996	2	0.1 %
Alonsa RM	809	803	6	0.7 %
Sandy Bay Ojibway First Nations*	2,576	2,513	63	2.5 %
DISTRICT: Rural Portage	7,184	7,102	82	1.2 %
Dakota Tipi First Nation*	141	128	13	10.2 %
Dakota Plains First Nation*	42	51	-9	-17.6 %
Long Plain First Nation*	908	904	4	0.4 %
Portage RM	6,093	6,019	74	1.2 %
DISTRICT: North Norfolk Municipality	4,529	4,494	35	0.8 %
DISTRICT: Cartier-SFX	9,267	9,029	238	2.6 %
Cartier RM	3,210	3,241	-31	-1.0 %
St Francois Xavier RM	1,325	1,308	17	1.3 %
Headingley RM	4,732	4,480	252	5.6 %
DISTRICT: Portage la Prairie City	16,109	16,035	74	0.5 %
ZONE 1 SUBTOTAL	43,472	42,972	500	1.2 %

Zone 2 – Population 2020



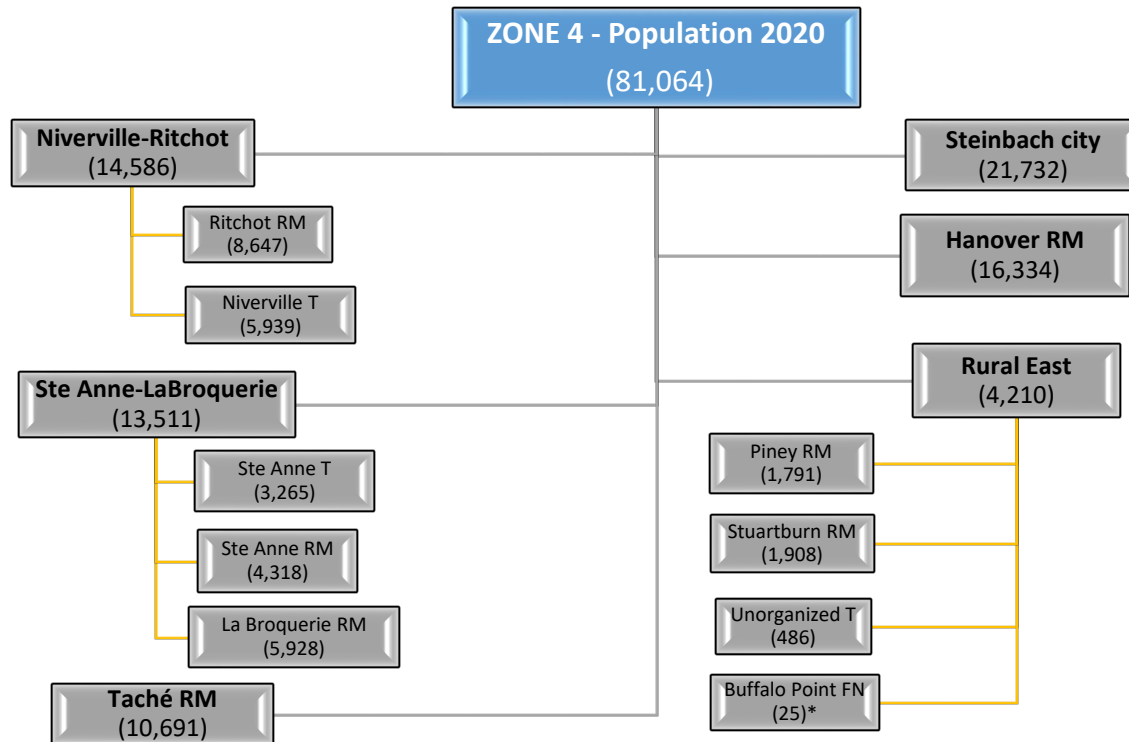
ZONE 2	2020	2019	Pop. Change	Percent Change
DISTRICT: Grey Municipality	2,867	2,831	36	1.3 %
DISTRICT: Macdonald RM	8,455	8,188	267	3.3 %
DISTRICT: Red River South	4,623	4,581	42	0.9 %
Emerson-Franklin Municipality	2,935	2,888	47	1.6 %
Montcalm RM	1,164	1,178	-14	-1.2 %
Roseau River Anishinabe FN*	524	515	9	1.7 %
DISTRICT: Carman	5,891	5,848	43	0.7 %
Carman T	4,170	4,135	35	0.8 %
Dufferin RM	1,721	1,713	8	0.5 %
DISTRICT: Morris	5,396	5,257	139	2.6 %
Morris RM	2,954	2,857	97	3.4 %
Morris T	2,442	2,400	42	1.8 %
DISTRICT: St. Pierre-De Salaberry	4,511	4,430	81	1.8 %
St. Pierre Jolys V	1,605	1,571	34	2.2 %
De Salaberry RM	2,906	2,859	47	1.6 %
ZONE 2 SUBTOTAL	31,743	31,135	608	2.0 %

Zone 3 – Population 2020



ZONE 3	2020	2019	Pop. Change	Percent Change
DISTRICT: Lorne/Louise/Pembina	8,305	8,162	143	1.8 %
Lorne Municipality	3,536	3,518	18	0.5 %
Louise Municipality	1,967	1,947	20	1.0 %
Pembina Municipality	2,573	2,478	95	3.8 %
Swan Lake FN*	229	219	10	4.6 %
DISTRICT: Altona	10,015	9,929	86	0.9 %
Rhineland Municipality	4,413	4,424	-11	-0.2 %
Altona T	5,602	5,505	97	1.8 %
DISTRICT: Stanley	5,554	5,610	-56	-1.0 %
DISTRICT: Roland/Thompson	2,166	2,154	12	0.6 %
Roland RM	949	933	16	1.7 %
Thompson RM	1,217	1,221	-4	-0.3 %
DISTRICT: Morden City	11,216	10,756	460	4.3 %
DISTRICT: Winkler City	18,361	17,930	431	2.4 %
ZONE 3 SUBTOTAL	55,617	54,541	1,076	2.0 %

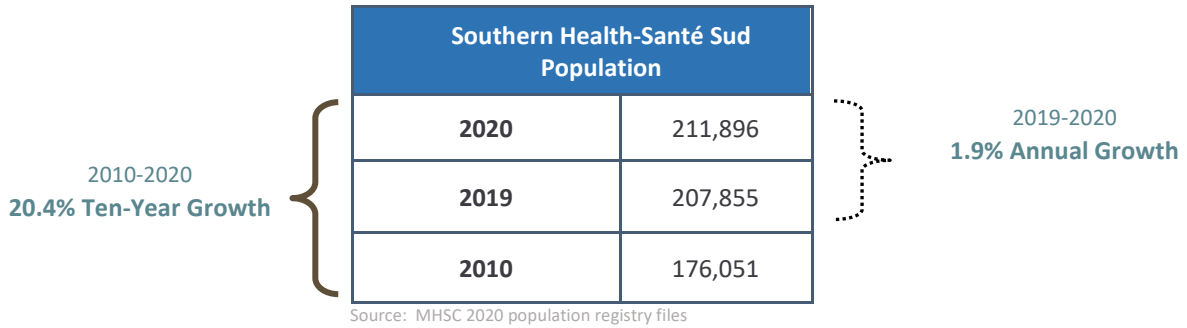
Zone 4 – Population 2020



ZONE 4	2020	2019	Pop. Change	Percent Change
DISTRICT: Niverville-Ritchot	14,586	14,122	464	3.3 %
Niverville T	5,939	5,691	248	4.4 %
Ritchot RM	8,647	8,431	216	2.6 %
DISTRICT: Ste. Anne-La Broquerie	13,511	13,130	381	2.9 %
Ste. Anne T	3,265	3,106	159	5.1 %
Ste. Anne RM	4,318	4,277	41	1.0 %
La Broquerie RM	5,928	5,747	181	3.1 %
DISTRICT: Taché	10,691	10,566	125	1.2 %
DISTRICT: Steinbach City	21,732	21,411	321	1.5 %
DISTRICT: Hanover	16,334	15,820	514	3.2 %
DISTRICT: Rural East	4,210	4,158	52	1.3 %
Piney RM	1,791	1,800	-9	-0.5 %
Stuartburn RM	1,908	1,861	47	2.5 %
Unorganized Territory	486	472	14	3.0 %
Buffalo Point FN*	25	25	0	0.0 %
ZONE 4 SUBTOTAL	81,064	79,207	1,857	2.3 %

10 Year Population Growth (2010-2020)

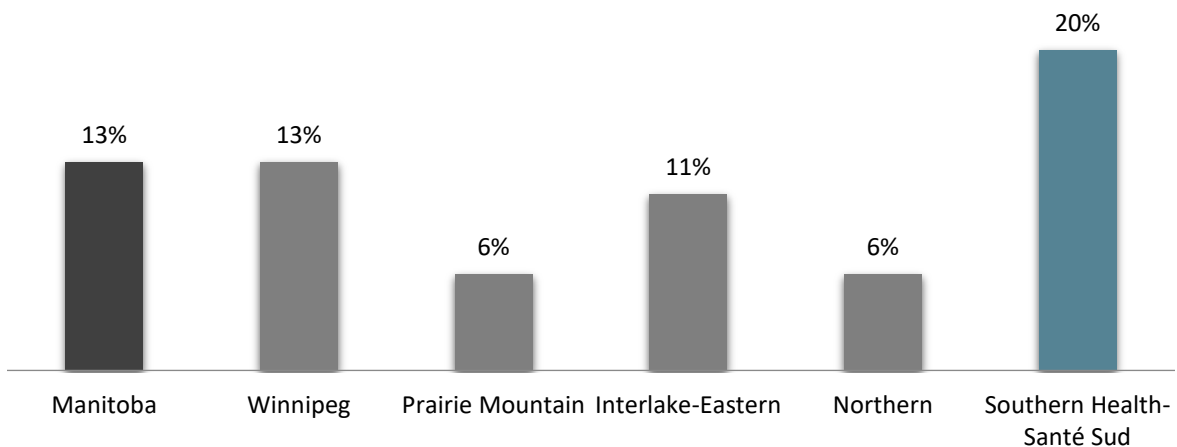
As shown below, the 2020 population for Southern Health-Santé Sud was **211,896** with an annual growth rate of 1.9%, and a ten-year growth rate of 20.4%. This translates to 4,041 more residents in the past year (2019 to 2020) and 35,845 more residents in the past ten years (2010 to 2020).



Manitoba Service Delivery Organization (SDO) Comparisons

Southern Health-Santé Sud continues to have the fastest growing population in Manitoba. It has grown by 20% in the past decade which is the highest in the province. The Manitoba average growth rate for this time period was 13%.

Manitoba Service Delivery Organizations Population Change 2010-2020.



Source: Manitoba Health and Seniors Care, Population Report 2010 and 2020

Although Southern Health-Santé Sud has the highest percentage of growth, it does not have the highest volume of growth for the province. As shown below, Manitoba has grown over 156,000 residents over the past decade. Winnipeg, during this time period, represented over 93,000 new residents and contributed to 59.4% of the Manitoba growth. Nevertheless, Southern Health-Santé Sud's contribution of 22.9% was the largest volume growth among rural SDOs. This population growth pattern for regions across Manitoba has been fairly consistent over the years.

Population Change among Manitoba Service Delivery Organizations, 2010-2020.

Service Delivery Organization	Population 2020	Population 2010	Population Change	Contribution to Manitoba Growth
Winnipeg (WRHA-incl. Churchill)	791,284	698,195	93,089	59.4 %
Prairie Mountain Health	172,641	162,713	9,928	6.3 %
Interlake-Eastern Regional Health Authority	133,834	120,661	13,173	8.4 %
Northern Health Region	77,283	72,650	4,633	3.0 %
Southern Health-Santé Sud	211,896	176,051	35,845	22.9 %
Manitoba	1,386,938	1,230,270	156,668	100.0 %

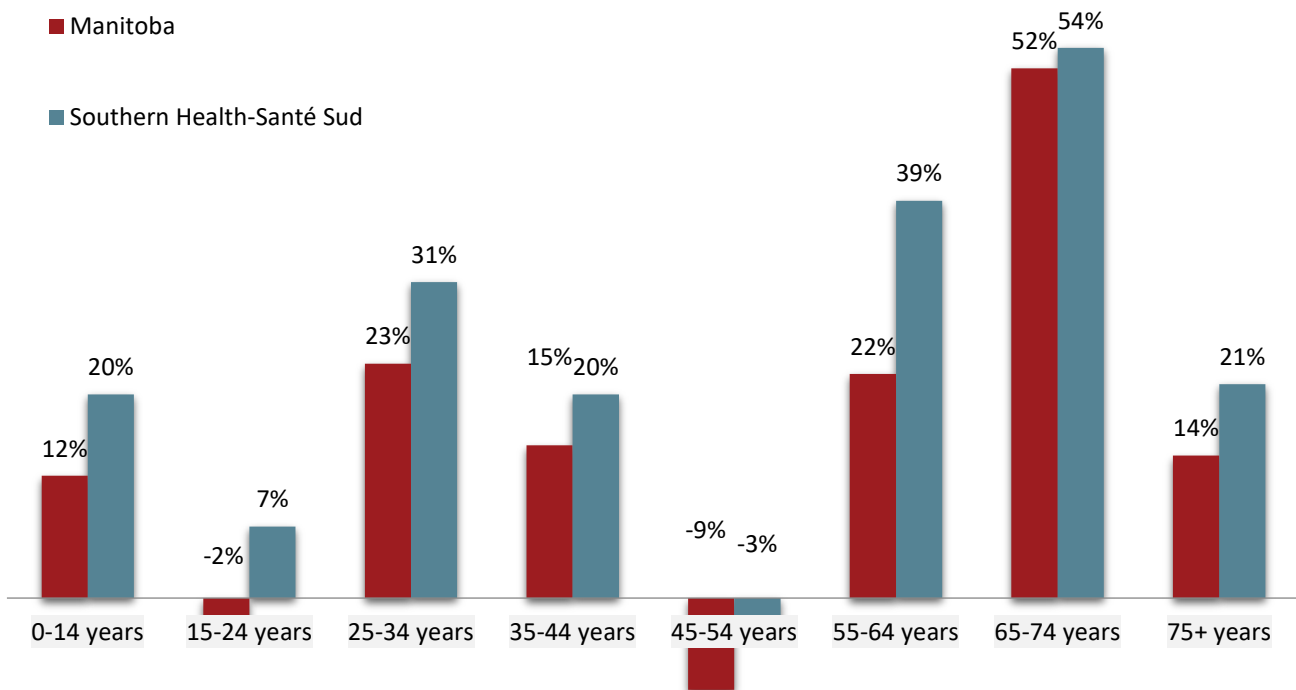
Source: Manitoba Health and Seniors Care 2010 and 2020 population registry files



Age Group Comparisons

Southern Health-Santé Sud’s population continues to grow across almost all age groups. In particular, it is worth noting that while Manitoba has only grown by 12% in the youngest age group (0-14 years), the region has grown by 20% in the youngest age group (0-14 years). Within the 55-64 year age group, the region’s population grew 39% compared to 22% for the province overall. The graph also depicts an aging population with the fastest growing cohort between 65-74 years (“baby boomers”).

Population Change by Age Group, Manitoba and Southern Health-Santé Sud, 2010-2020.

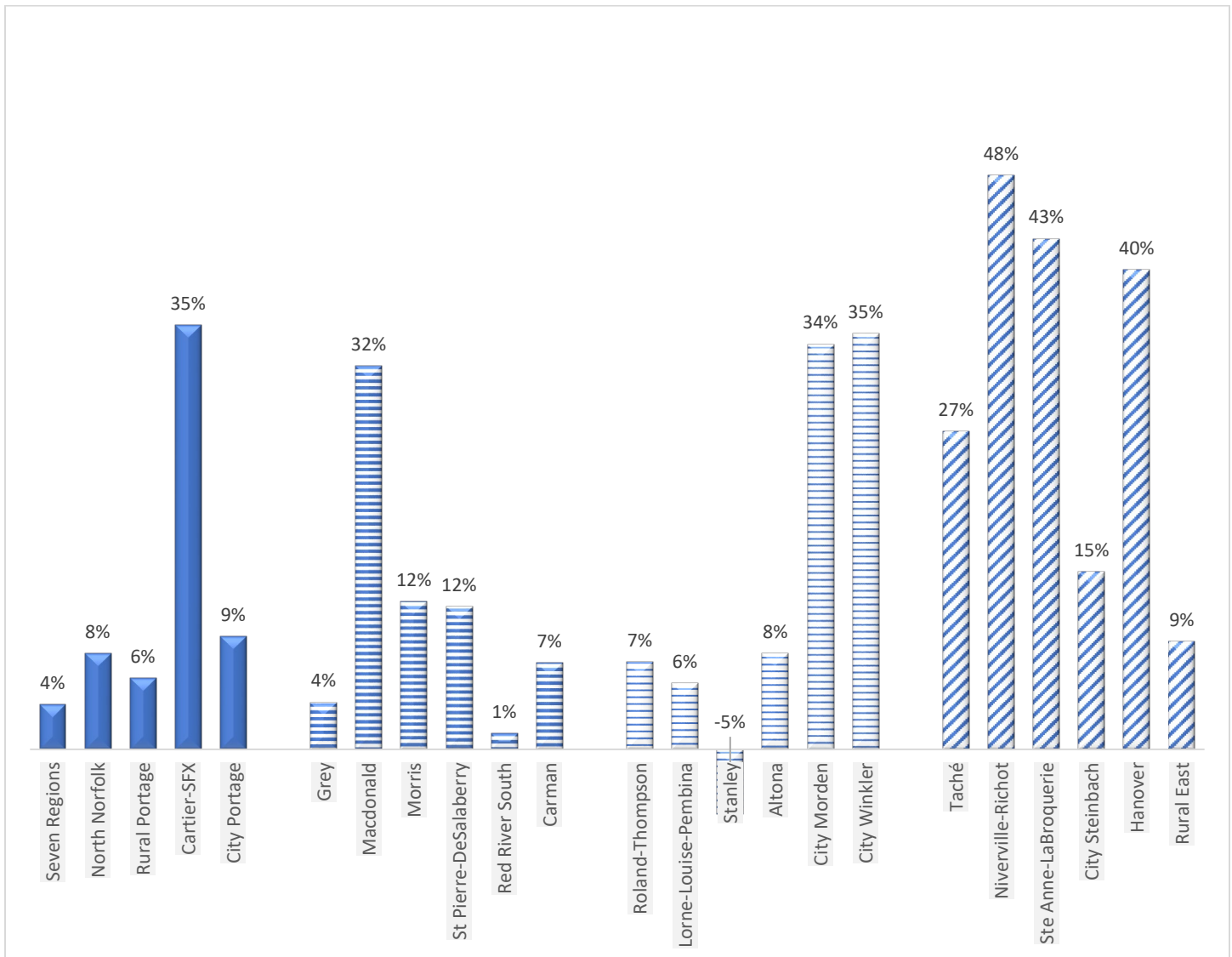


Source: Manitoba Health and Seniors Care, Population Report 2010 and 2020

District and Municipal Population Change

The figure below shows the population growth within the region by districts. The district of Niverville-Richot experienced the highest rate of growth at 48%. The general trend for population growth in Southern Health-Santé Sud is the highest around bedroom communities close to Winnipeg and the four cities within the region. The districts, which experienced a lot of population change (25 percent or more), included: Cartier-SFX, Macdonald, Morden city, Winkler city, Taché, Niverville-Ritchot, Ste Anne-LaBroquerie and Hanover. In contrast, the districts which experienced very little population change (5 percent or less) included: Seven Regions, Grey, Red River South, and Stanley.

Population Growth by Districts, Southern Health-Santé Sud, 2010-2020.



Source: Manitoba Health and Seniors Care, Population Report 2010 and 2020

Population Growth by Districts and Municipalities, 2010-2020

Zone 1	Population 2020	Population 2010	Population Change	Percent Change
District: Seven Regions	6,383	6,155	228	3.7%
Westlake-Gladstone Municipality	2,998	2,961	37	1.2%
Alonsa RM	809	830	-21	-2.5%
Sandy Bay First Nations*	2,576	2,364	212	9.0%
District: North Norfolk Municipality	4,529	4,195	334	8.0%
District: Rural Portage	7,184	6,786	398	5.9%
Dakota Tipi first Nation*	141	109	32	29.4%
Dakota Plains First Nation*	42	39	3	7.7%
Long Plain First Nation*	908	789	119	15.1%
Portage RM	6,093	5,849	244	4.2%
District: Cartier-SFX	9,267	6,845	2,422	35.4%
Cartier RM	3,210	3,057	153	5.0%
St. Francois Xavier RM	1,325	1,156	169	14.6%
Headingley RM	4,732	2,632	2,100	79.8%
District: Portage city	16,109	14,730	1,379	9.4%
ZONE 1 SUBTOTAL	43,472	38,711	4,761	12.3%

Zone 2	Population 2020	Population 2010	Population Change	Percent Change
District: Grey Municipality	2,867	2,760	107	3.9%
District: Macdonald	8,455	6,405	2,050	32.0%
District: Red River South	4,623	4,565	58	1.3%
Emerson-Franklin Municipality	2,935	2,782	153	5.5%
Montcalm RM	1,164	1,259	-95	-7.5%
Roseau River First Nation*	524	524	0	0.0%
District: Carman	5,891	5,494	397	7.2%
Carman T	4,170	3,507	663	18.9%
Dufferin RM	1,721	1,987	-266	-13.4%
District: Morris	5,396	4,806	590	12.3%
Morris RM	2,954	2,751	203	7.4%
Morris T	2,442	2,055	387	18.8%
District: St Pierre-DeSalaberry	4,511	4,030	481	11.9%
St Pierre Jolys V	1,605	1,290	315	24.4%
De Salaberry RM	2,906	2,740	166	6.1%
ZONE 2 SUBTOTAL	31,743	30,078	1,665	5.5%

Zone 3		Population 2020	Population 2010	Population Change	Percent Change
District: Lorne/Louise/Pembina		8,305	7,869	436	5.5%
	Lorne Municipality	3,536	3,356	180	5.4%
	Louise Municipality	1,967	1,923	44	2.3%
	Pembina Municipality	2,573	2,374	199	8.4%
	Swan Lake First Nation*	229	216	13	6.0%
District: Altona		10,015	9,270	745	8.0%
	Rhineland Municipality	4,413	4,646	-233	-5.0%
	Altona T	5,602	4,624	978	21.2%
District: Stanley		5,554	5,868	-314	-5.4%
District: Morden City		11,216	8,381	2,835	33.8%
District: Roland/Thompson		2,166	2,018	148	7.3%
	Roland RM	949	894	55	6.2%
	Thompson RM	1,217	1,124	93	8.3%
District: Winkler City		18,361	13,626	4,735	34.7%
	ZONE 3 SUBTOTAL	55,617	45,014	10,603	23.6%

Zone 4		Population 2020	Population 2010	Population Change	Percent Change
District: Niverville/Ritchot		14,586	9,864	4,722	47.9%
	Niverville T	5,939	3,661	2,278	62.2%
	Ritchot RM	8,647	6,203	2,444	39.4%
District: Ste. Anne/La Broquerie		13,511	9,473	4,038	42.6%
	Ste. Anne T	3,265	2,366	899	38.0%
	Ste. Anne RM	4,318	4,614	-296	-6.4%
	La Broquerie RM	5,928	2,493	3,435	137.8%
District: Taché		10,691	8,452	2,239	26.5%
District: Steinbach City		21,732	18,926	2,806	14.8%
District: Hanover		16,334	11,670	4,664	40.0%
District: Rural East		4,210	3,863	347	9.0%
	Piney RM	1,791	1,747	44	2.5%
	Stuartburn RM	1,908	1,653	255	15.4%
	Unorganized Territories	486	463	23	5.0%
	Buffalo Point First Nation*	25	0	25	-
	ZONE 4 SUBTOTAL	81,064	62,248	18,816	30.2%

Indigenous Population

Consultations with Indigenous communities related to this report are on hold due to COVID-19 pandemic and updated Indigenous Population data will be included as a supplement to this report when available.

In 2019, Manitoba Centre for Health Policy (MCHP) and the First Nations Health and Social Secretariat of Manitoba (FNHSSM) partnered to create a report called “The Health Status of and Access to Healthcare by Registered First Nation Peoples in Manitoba”

This deliverable is the product of a strong and developing relationship between MCHP and the First Nations Health and Social Secretariat of Manitoba. It looks at health and healthcare use patterns of First Nations people living in Manitoba. The analyses provide comparisons between First Nations and all other Manitobans, comparisons between on and off reserve First Nations, and regional comparisons by Regional Health Authority and by Tribal Council Areas. It is the first study to use the Regional Health Survey which includes on-reserve First Nation peoples. The results demonstrate the widening gap between the health of First Nations and all other Manitobans and point to inequities in service provision.

Manitoba Centre for Health Policy

[Click here to view the report and other supplemental information online.](#)

