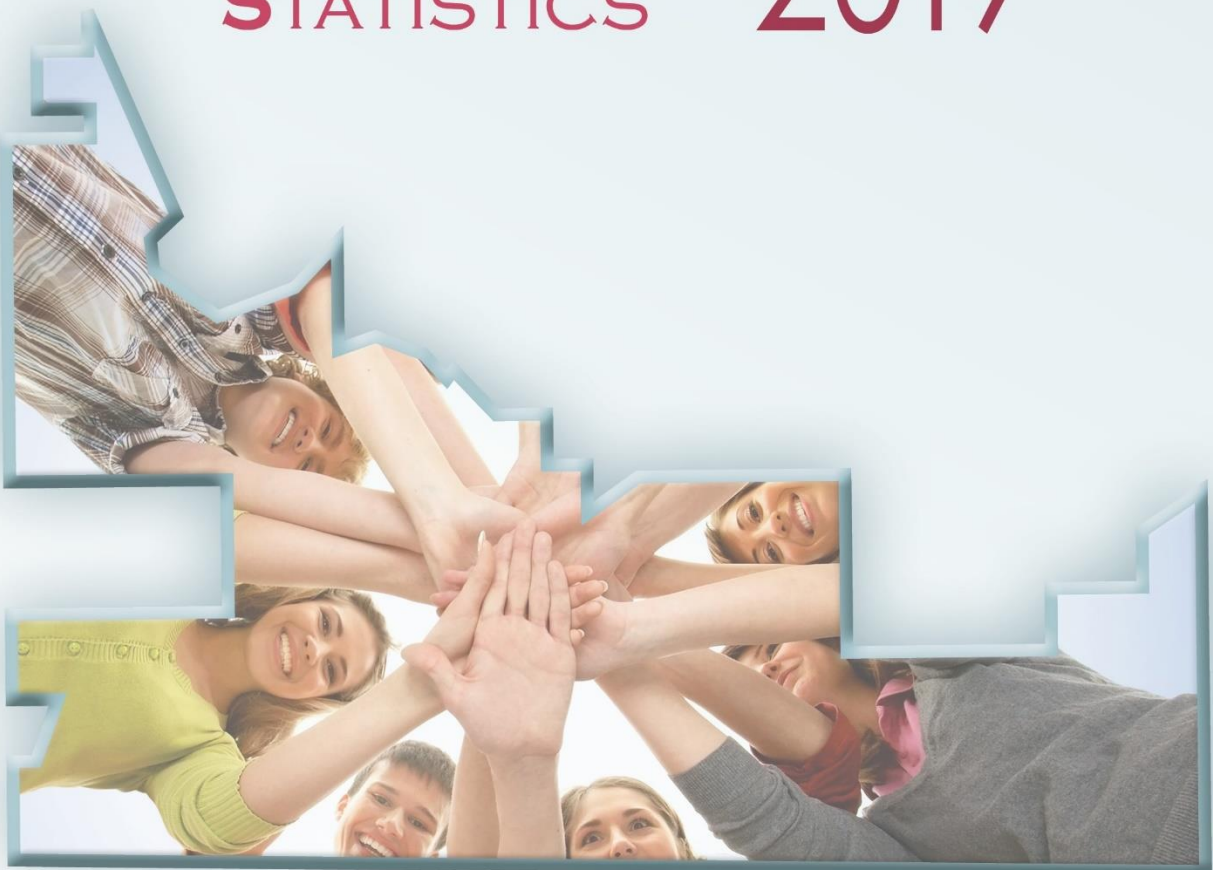


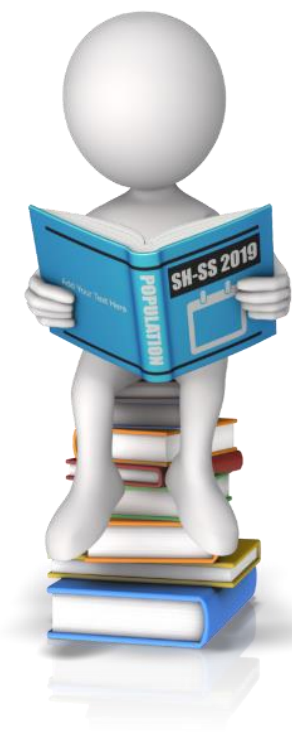


Southern **Health-Santé** Sud
POPULATION **2019**
STATISTICS



Contents

About This Report	3
2019 Population - Southern Health-Santé Sud	4
Zone 1 – Population 2019	5
Zone 2 – Population 2019	6
Zone 3 – Population 2019	7
Zone 4 – Population 2019	8
10 Year Population Growth (2009-2019)	9
Manitoba RHA Comparisons	9
Age Group Comparisons	11
District and Municipal Population Change	12
Population Growth by Districts and Municipalities, 2009-2019	13
Indigenous Population	15



About This Report

The population data shown in this report is based on records of residents actively registered with Manitoba Health as of June 1, 2019 and published by Manitoba Health, Seniors and Active Living (<https://www.gov.mb.ca/health/population/>). This population database is considered a reliable and accurate estimate of population sizes, and is helpful for understanding trends and useful for health planning purposes.

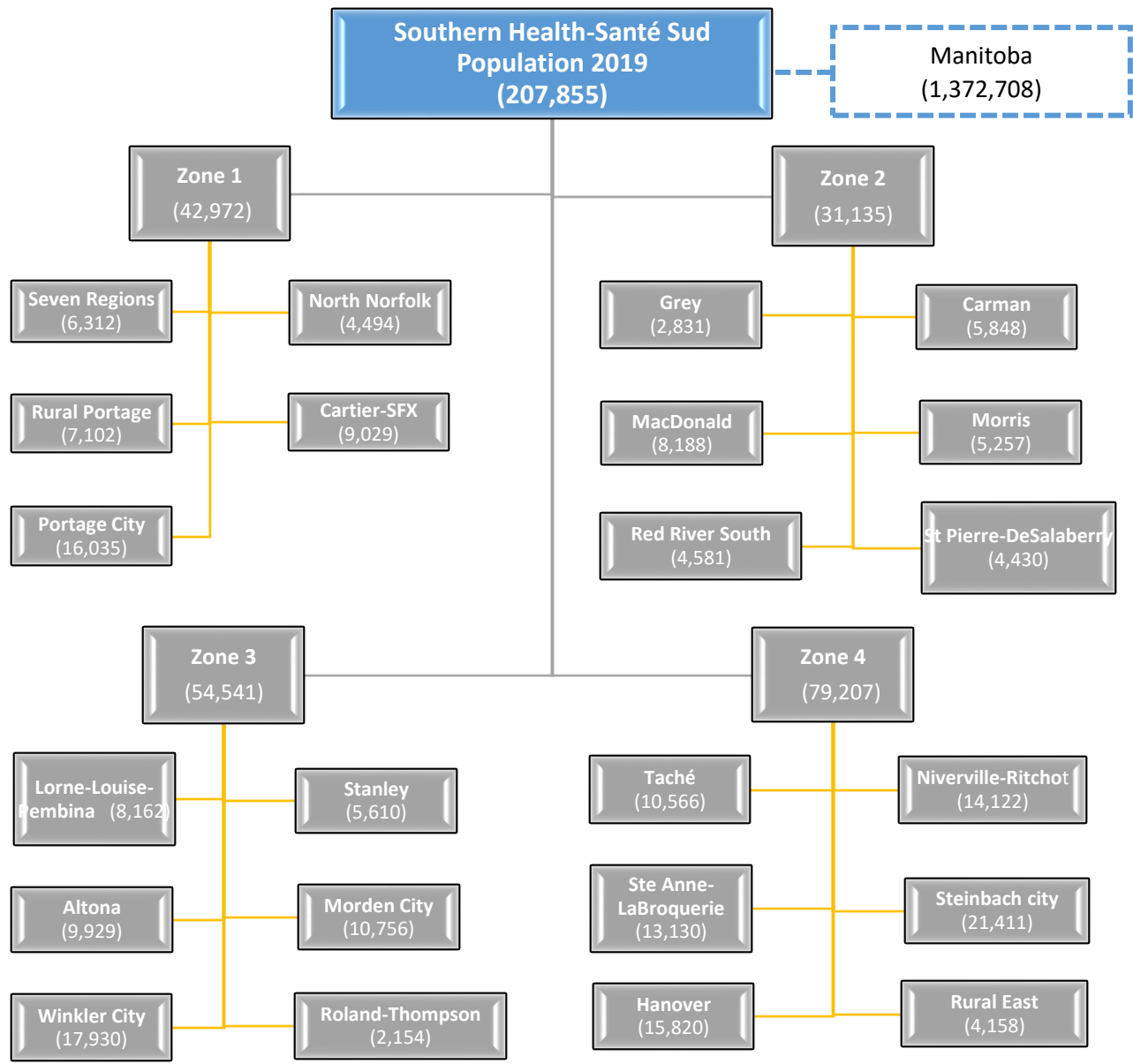
Label Change to Population Report

The population report is organized by four smaller geographies within Southern Health-Santé Sud. In previous reports this was referred to as “areas”, however going forward this will be referred to as “zones”.

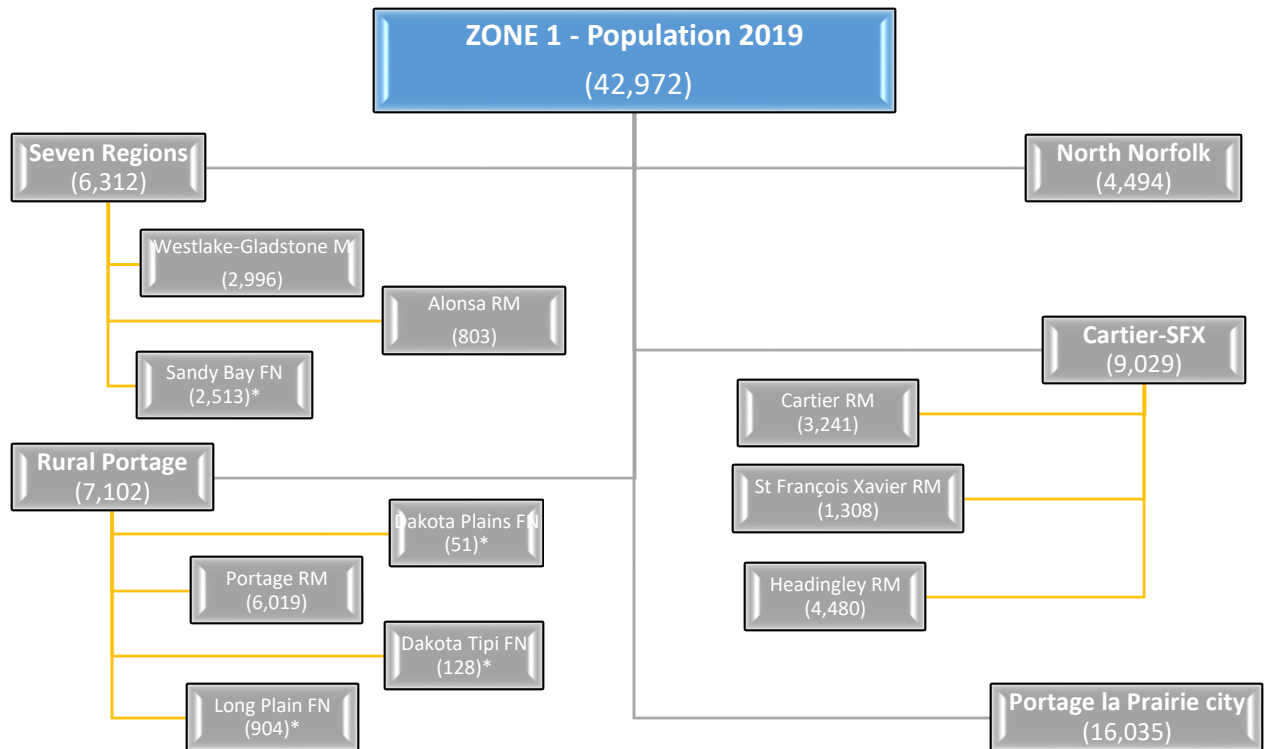
New Zone	Former Area
Zone 1	North area
Zone 2	Mid area
Zone 3	West area
Zone 4	East area



2019 Population - Southern Health-Santé Sud

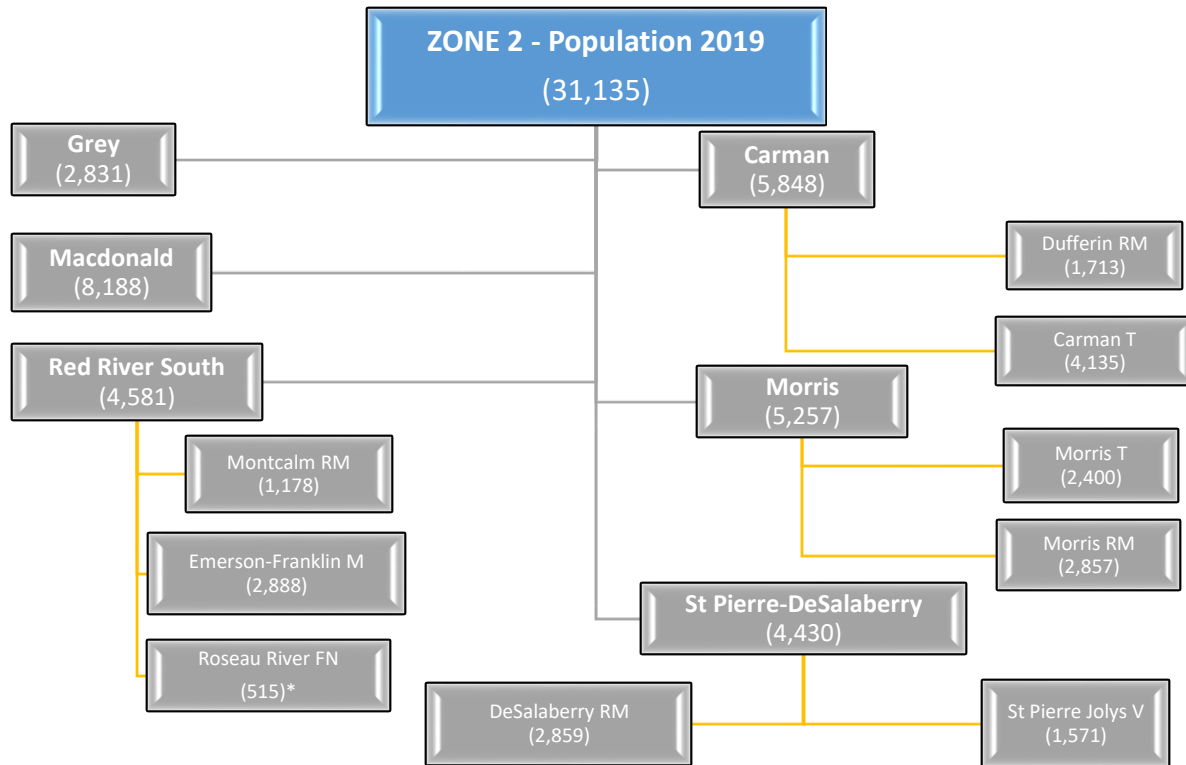


Zone 1 – Population 2019



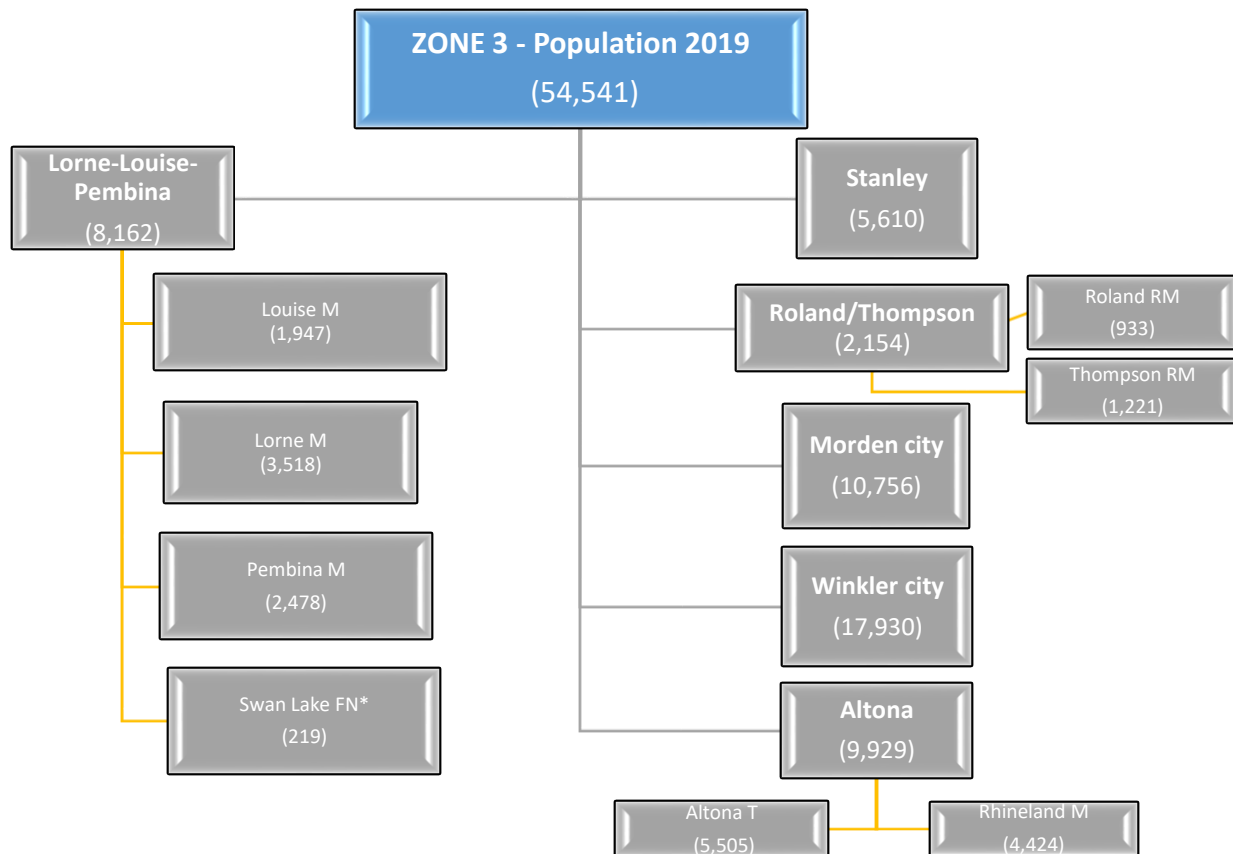
ZONE 1	2019	2018	Pop. Change	Percent Change	
DISTRICT: Seven Regions	6,312	6,270	42	0.7	%
Westlake-Gladstone Municipality	2,996	2,991	5	0.2	%
Alonsa RM	803	786	17	2.2	%
Sandy Bay Ojibway First Nations*	2,513	2,493	20	0.8	%
DISTRICT: Rural Portage	7,102	7,018	84	1.2	%
Dakota Tipi First Nation*	128	133	-5	-3.8	%
Dakota Plains First Nation*	51	54	-3	-5.6	%
Long Plain First Nation*	904	843	61	7.2	%
Portage RM	6,019	5,988	31	0.5	%
DISTRICT: North Norfolk Municipality	4,494	4,456	38	0.9	%
DISTRICT: Cartier-SFX	9,029	8,549	480	5.6	%
Cartier RM	3,241	3,213	28	0.9	%
St Francois Xavier RM	1,308	1,276	32	2.5	%
Headingley RM	4,480	4,060	420	10.3	%
DISTRICT: Portage la Prairie City	16,035	15,905	130	0.8	%
ZONE 1 SUBTOTAL	42,972	42,198	774	1.8	%

Zone 2 – Population 2019



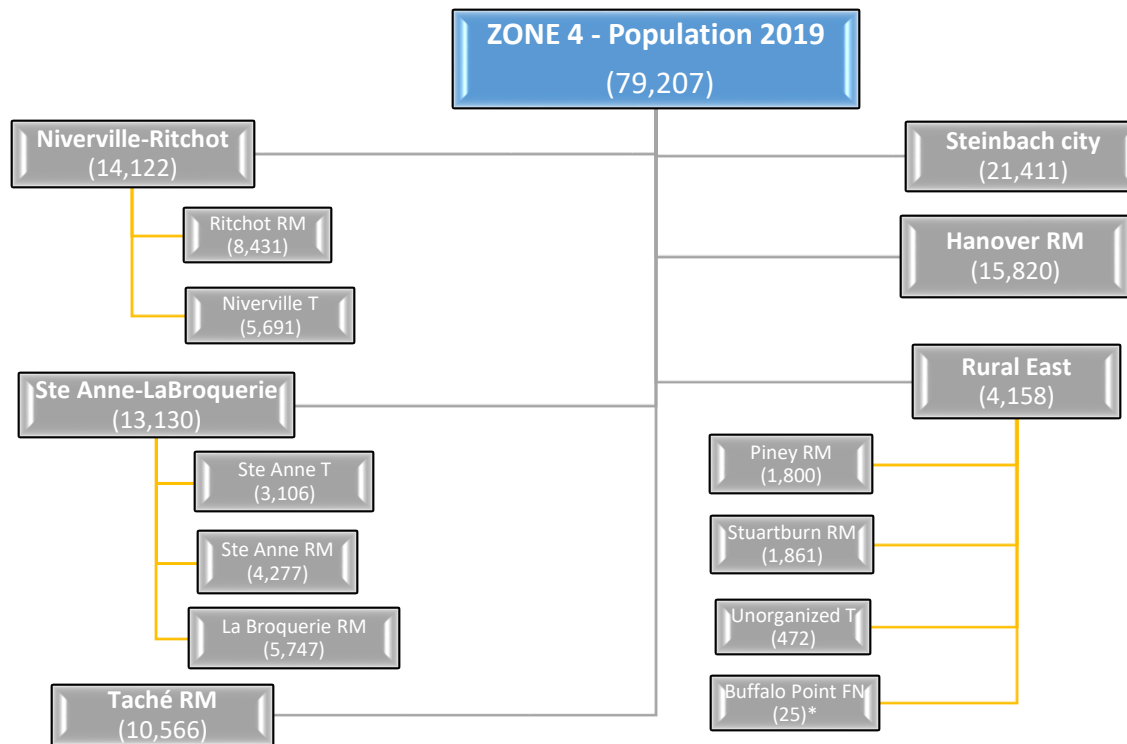
ZONE 2 SUBTOTAL	2019	2018	Pop. Change	Percent Change	
DISTRICT: Grey Municipality	2,831	2,843	-12	-0.4	%
DISTRICT: Macdonald RM	8,188	8,027	161	2.0	%
DISTRICT: Red River South	4,581	4,536	45	1.0	
Emerson-Franklin Municipality	2,888	2,853	35	1.2	%
Montcalm RM	1,178	1,169	9	0.8	%
Roseau River Anishinabe FN*	515	514	1	0.2	%
DISTRICT: Carman	5,848	5,850	-2	0.0	%
Carman T	4,135	4,126	9	0.2	%
Dufferin RM	1,713	1,724	-11	-0.6	%
DISTRICT: Morris	5,257	5,159	98	1.9	%
Morris RM	2,857	2,817	40	1.4	%
Morris T	2,400	2,342	58	2.5	%
DISTRICT: St. Pierre-De Salaberry	4,430	4,396	34	0.8	%
St. Pierre Jolys V	1,571	1,532	39	2.5	%
De Salaberry RM	2,859	2,864	-5	-0.2	%
ZONE 2 SUBTOTAL	31,135	30,811	324	1.1	%

Zone 3 – Population 2019



ZONE 3 SUBTOTAL	2019	2018	Pop. Change	Percent Change	
DISTRICT: Lorne/Louise/Pembina	8,162	8,091	71	0.9	%
Lorne Municipality	3,518	3,487	31	0.9	%
Louise Municipality	1,947	1,925	22	1.1	%
Pembina Municipality	2,478	2,427	51	2.1	%
Swan Lake FN*	219	252	-33	-13.1	%
DISTRICT: Altona	9,929	9,806	123	1.3	%
Rhineland Municipality	4,424	4,404	20	0.5	%
Altona T	5,505	5,402	103	1.9	%
DISTRICT: Stanley	5,610	5,668	-58	-1.0	%
DISTRICT: Roland/Thompson	2,154	2,101	53	2.5	%
Roland RM	933	919	14	1.5	%
Thompson RM	1,221	1,182	39	3.3	%
DISTRICT: Morden City	10,756	10,497	259	2.5	%
DISTRICT: Winkler City	17,930	17,436	494	2.8	%
ZONE 3 SUBTOTAL	54,541	53,599	942	1.8	%

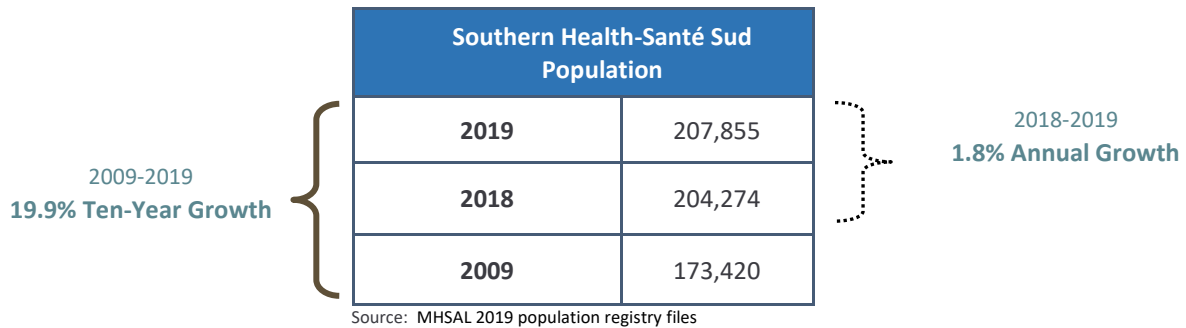
Zone 4 – Population 2019



ZONE 4 SUBTOTAL	2019	2018	Pop. Change	Percent Change	
DISTRICT: Niverville-Ritchot	14,122	13,164	958	7.3	%
Niverville T	5,691	5,151	540	10.5	%
Ritchot RM	8,431	8,013	418	5.2	%
DISTRICT: Ste. Anne-La Broquerie	13,130	13,530	-400	-3.0	%
Ste. Anne T	3,106	2,834	272	9.6	%
Ste. Anne RM	4,277	5,224	-947	-18.1	%
La Broquerie RM	5,747	5,472	275	5.0	%
DISTRICT: Taché	10,566	9,424	1,142	12.1	%
DISTRICT: Steinbach City	21,411	21,000	411	2.0	%
DISTRICT: Hanover	15,820	14,727	1,093	7.4	%
DISTRICT: Rural East	4,158	4,073	85	2.1	%
Piney RM	1,800	1,782	18	1.0	%
Stuartburn RM	1,861	1,806	55	3.0	%
Unorganized Territory	472	454	18	4.0	%
Buffalo Point FN*	25	31	-6	-19.4	%
ZONE 4 SUBTOTAL	79,207	75,918	3,289	4.3	%

10 Year Population Growth (2009-2019)

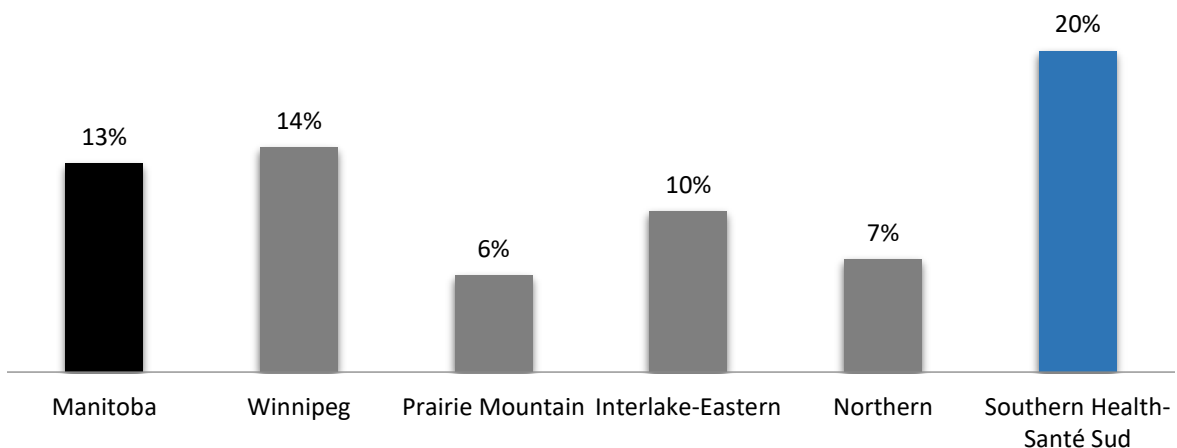
As shown below, the 2019 population for the Southern Health-Santé Sud was **207,855** with an annual growth rate of 1.8%, and a ten-year growth rate of 19.9%. This translates to 3,581 more residents in the past year (2018 to 2019) and to 34,435 more residents in the past ten years (2009 to 2019).



Manitoba RHA Comparisons

Southern Health-Santé Sud continues to have the fastest growing population in Manitoba. It has grown by 20% in the past decade which is the highest in the province. The Manitoba average growth rate for this time period was 13%.

Manitoba Regional Health Authorities Population Change 2009-2019.



Source: Manitoba Health, Seniors and Active Living, Population Report 2009 and 2019

Although Southern Health-Santé Sud has the highest percentage of growth, it does not have the highest volume of growth for the province. As shown below, Manitoba has grown over 158,000 residents over the past decade. Winnipeg, during this time period, represented over 95,000 new residents and contributed to 61% of the Manitoba growth. Nevertheless, Southern Health-Santé Sud’s contribution of 21.8%, was the largest volume growth among rural RHAs. This population growth pattern for regions across Manitoba has been fairly consistent over the years.

Population Change among Manitoba Regional Health Authorities, 2009-2019.

Regional Health Authority	Population 2019	Population 2009	Population Change	Contribution to Manitoba Growth	
Winnipeg (WRHA-incl. Churchill)	784,441	688,533	95,908	60.6	%
Prairie Mountain Health	171,458	161,113	10,345	6.5	%
Interlake-Eastern	132,126	119,592	12,534	7.9	%
Northern	76,828	71,745	5,083	3.2	%
Southern Health-Santé Sud	207,855	173,420	34,435	21.8	%
Manitoba	1,372,708	1,214,403	158,305	100.0	%

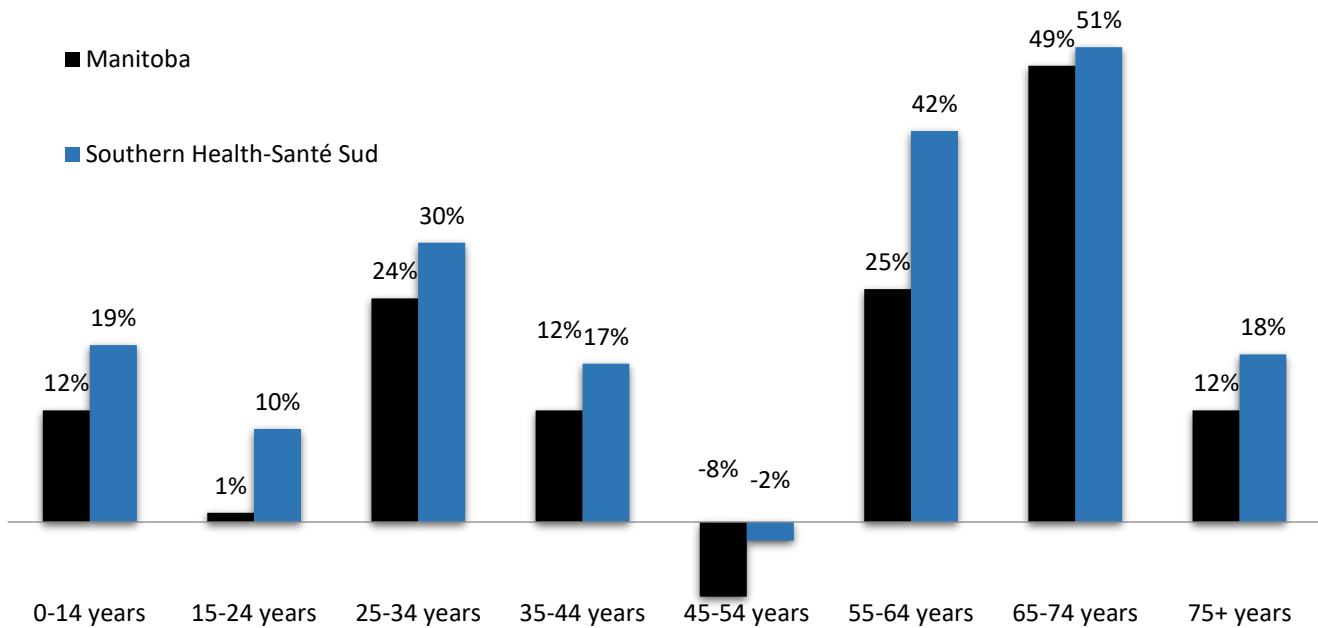
Source: MHSAL 2009 and 2019 population registry files



Age Group Comparisons

Southern Health-Santé Sud’s population continues to grow across almost all age groups. In particular, it is worth noting that while Manitoba has only grown by 12% in the youngest age group (0-14 years), the region has grown by 19% in the youngest age group (0-14 years). The graph also depicts an aging population with the fastest growing cohort between 65-74 years (“baby boomers”).

Population Change by Age Group, Manitoba and Southern Health-Santé Sud, 2009-2019.

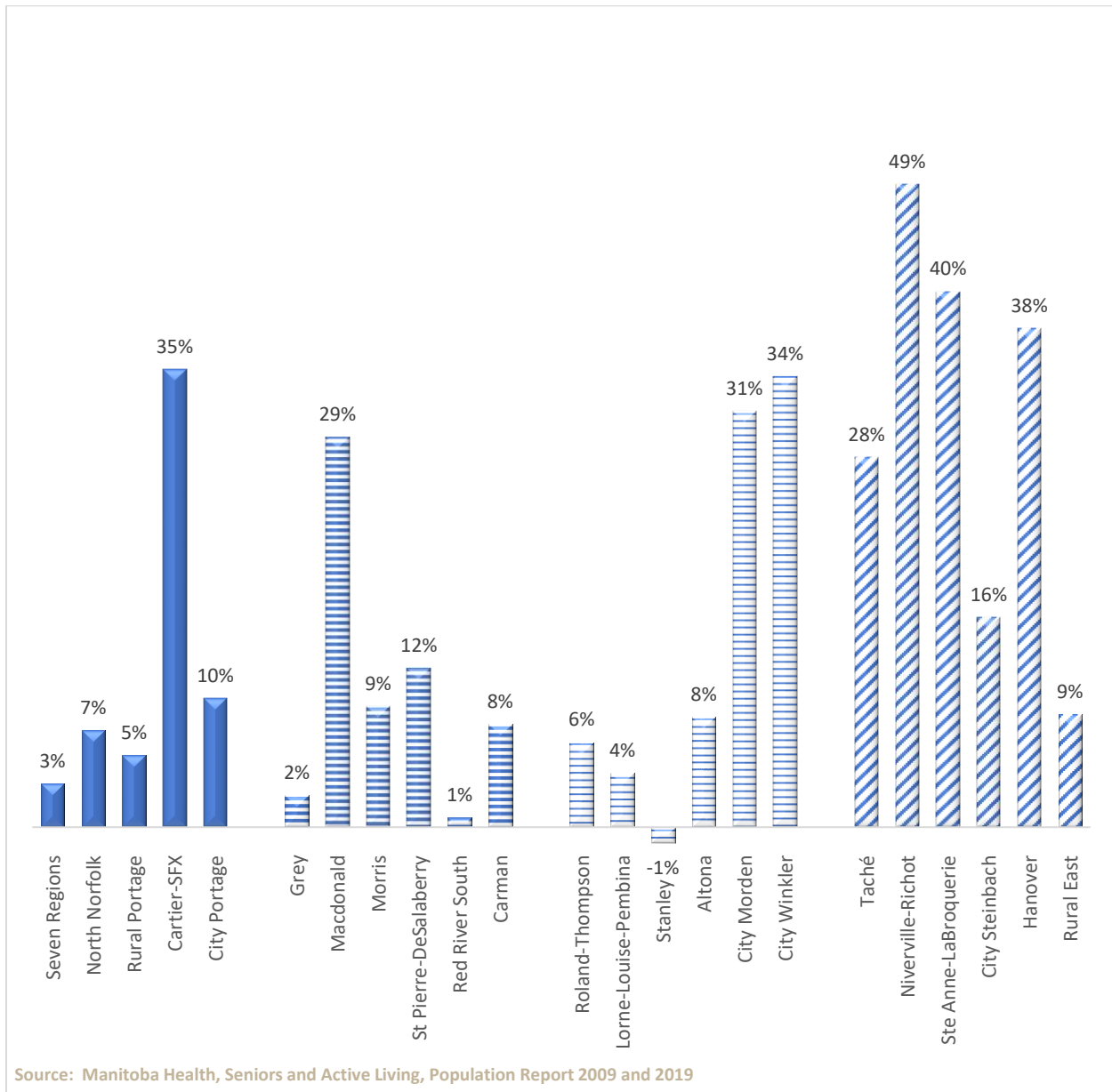


Source: Manitoba Health, Seniors and Active Living, Population Report 2009 and 2019

District and Municipal Population Change

The figure below shows the population growth within the region by districts. The district of Niverville-Richot experienced the highest rate of growth at 49%. The general trend for population growth in Southern Health-Santé Sud is the highest around bedroom communities close to Winnipeg and the four cities within the region. The districts, which experienced a lot of population change (25 percent or more), included: Cartier-SFX, Macdonald, Morden city, Winkler city, Taché, Niverville-Ritchot, Ste Anne-LaBroquerie and Hanover. In contrast, the districts which experienced very little population change (5 percent or less) included: Seven Regions, Rural Portage, Grey, Red River South, Lorne/Louise/Pembina, and Stanley.

Population Growth by Districts, Southern Health-Santé Sud, 2009-2019.



Population Growth by Districts and Municipalities, 2009-2019

Zone 1	Population 2019	Population 2009	Population Change	Percent Change
District: Seven Regions	6,312	6,110	202	3.3%
Westlake-Gladstone Municipality	2,996	2,976	20	0.7%
Alonsa RM	803	817	-14	-1.7%
Sandy Bay First Nations*	2,513	2,317	196	8.5%
District: North Norfolk Municipality	4,494	4,189	305	7.3%
District: Rural Portage	7,102	6,738	364	5.4%
Dakota Tipi first Nation*	128	120	8	6.7%
Dakota Plains First Nation*	51	41	10	24.4%
Long Plain First Nation*	904	767	137	17.9%
Portage RM	6,019	5,810	209	3.6%
District: Cartier-SFX	9,029	6,711	2,318	34.5%
Cartier RM	3,241	3,061	180	5.9%
St. Francois Xavier RM	1,308	1,128	180	16.0%
Headingley RM	4,480	2,522	1,958	77.6%
District: Portage city	16,035	14,612	1,423	9.7%
ZONE 1 SUBTOTAL	42,972	38,360	4,612	12.0%

Zone 2	Population 2019	Population 2009	Population Change	Percent Change
District: Grey Municipality	2,831	2,765	66	2.4%
District: Macdonald	8,188	6,326	1,862	29.4%
District: Red River South	4,581	4,549	32	0.7%
Emerson-Franklin Municipality	2,888	2,766	122	4.4%
Montcalm RM	1,178	1,252	-74	-5.9%
Roseau River First Nation*	515	531	-16	-3.0%
District: Carman	5,848	5,427	421	7.8%
Carman T	4,135	3,404	731	21.5%
Dufferin RM	1,713	2,023	-310	-15.3%
District: Morris	5,257	4,819	438	9.1%
Morris RM	2,857	2,776	81	2.9%
Morris T	2,400	2,043	357	17.5%
District: St Pierre-DeSalaberry	4,430	3,954	476	12.0%
St Pierre Jolys V	1,571	1,211	360	29.7%
De Salaberry RM	2,859	2,743	116	4.2%
ZONE 2 SUBTOTAL	31,135	27,840	3,775	13.6%

Zone 3		Population 2019	Population 2009	Population Change	Percent Change
District: Lorne/Louise/Pembina		8,162	7,842	320	4.1%
	Lorne Municipality	3,518	3,357	161	4.8%
	Louise Municipality	1,947	1,915	32	1.7%
	Pembina Municipality	2,478	2,351	127	5.4%
	Swan Lake First Nation*	219	219	0	0.0%
District: Altona		9,929	9,169	760	8.3%
	Rhineland Municipality	4,424	4,660	-236	-5.1%
	Altona T	5,505	4,509	996	22.1%
District: Stanley		5,610	5,681	-71	-1.2%
District: Morden City		10,756	8,184	2,572	31.4%
District: Roland/Thompson		2,154	2,024	130	6.4%
	Roland RM	933	890	43	4.8%
	Thompson RM	1,221	1,134	87	7.7%
District: Winkler City		17,930	13,382	4,548	34.0%
	ZONE 3 SUBTOTAL	54,541	46,282	8,129	17.6%

Zone 4		Population 2019	Population 2009	Population Change	Percent Change
District: Niverville/Ritchot		14,122	9,508	4,614	48.5%
	Niverville T	5,691	3,440	2,251	65.4%
	Ritchot RM	8,431	6,068	2,363	38.9%
District: Ste. Anne/La Broquerie		13,130	9,350	3,780	40.4%
	Ste. Anne T	3,106	2,332	774	33.2%
	Ste. Anne RM	4,277	4,612	-335	-7.3%
	La Broquerie RM	5,747	2,406	3,341	138.9%
District: Taché		10,566	8,261	2,305	27.9%
District: Steinbach City		21,411	18,494	2,917	15.8%
District: Hanover		15,820	11,494	4,326	37.6%
District: Rural East		4,158	3,831	327	8.5%
	Piney RM	1,800	1,723	77	4.5%
	Stuartburn RM	1,861	1,665	196	11.8%
	Unorganized Territories	472	442	30	6.8%
	Buffalo Point First Nation*	25	1	24	2400.0%
	ZONE 4 SUBTOTAL	79,207	60,938	18,269	30.0%

Indigenous Population

Consultations with Indigenous communities put on hold due to COVID-19 pandemic, and updated Indigenous Population data will be included as a supplement to this report when available.

