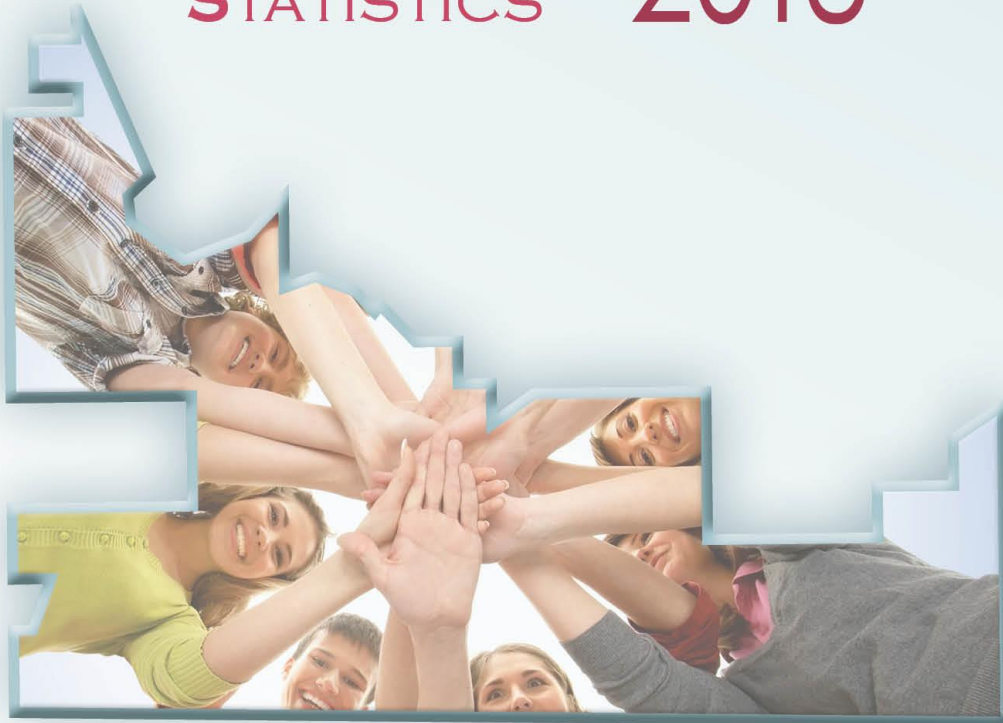




Southern **Health-Santé** Sud  
**POPULATION** **2018**  
**STATISTICS**



## TABLE OF CONTENTS

BACKGROUND	3
MUNICIPAL AMALGAMATIONS FOR 2018	3
2018 POPULATION – SOUTHERN HEALTH-SANTÉ SUD	4
ZONE 1 (FORMER NORTH AREA)	5
ZONE 2 (FORMER MID AREA)	6
ZONE 3 (FORMER WEST AREA)	7
ZONE 4 (FORMER EAST AREA)	8
10 YEAR POPULATION GROWTH (2008-2018)	9
MANITOBA RHA COMPARISONS	9
AGE GROUP COMPARISONS	11
DISTRICT AND MUNICIPAL POPULATION CHANGE	12
INDIGENOUS POPULATION	15
MAP OF REGION	16



This publication is available in alternate format upon request.

## ABOUT THIS REPORT

The population data shown in this report is based on records of residents actively registered with Manitoba Health as of June 1, 2018 and published by Manitoba Health, Seniors and Active Living (<http://www.gov.mb.ca/health/population/>). This population database is considered a reliable and accurate estimate of population sizes, and is helpful for understanding trends and useful for health planning purposes. The Indigenous population has also been updated in March 2019 by the Indigenous Health program with the great help of Band Membership clerks.



Please note that in 2018, international students, their spouses, and dependents were excluded because they were no longer eligible for provincial health insurance. This has impacted the population counts by approximately 10,000, largely from WRHA, compared to previous reports.

### Municipal Amalgamations

A series of municipal amalgamations came into effect as of January 1, 2015. A map of Southern Health-Santé Sud is on page 16. These newly defined municipalities affect the following areas:

New Municipality	Former Municipalities	District Name
Emerson-Franklin Municipality	Emerson T, Franklin RM	Emerson-Franklin
Grey Municipality	Grey RM, St Claude V	Grey
Lorne Municipality	Lorne RM, Somerset V, Notre Dame des Lourdes V	Lorne
Louise Municipality	Louise RM, Crystal City V, Pilot Mound T	Louise
North Norfolk Municipality	North Norfolk RM, MacGregor T	North Norfolk
Pembina Municipality	Pembina RM, Manitou T	Pembina
Rhineland Municipality	Rhineland RM, Plum Coulee T, Gretna T	Rhineland
Westlake-Gladstone Municipality	Lakeview RM, Westbourne RM, Gladstone T	Westlake-Gladstone
Morris Municipality	Morris T, Morris RM	Morris

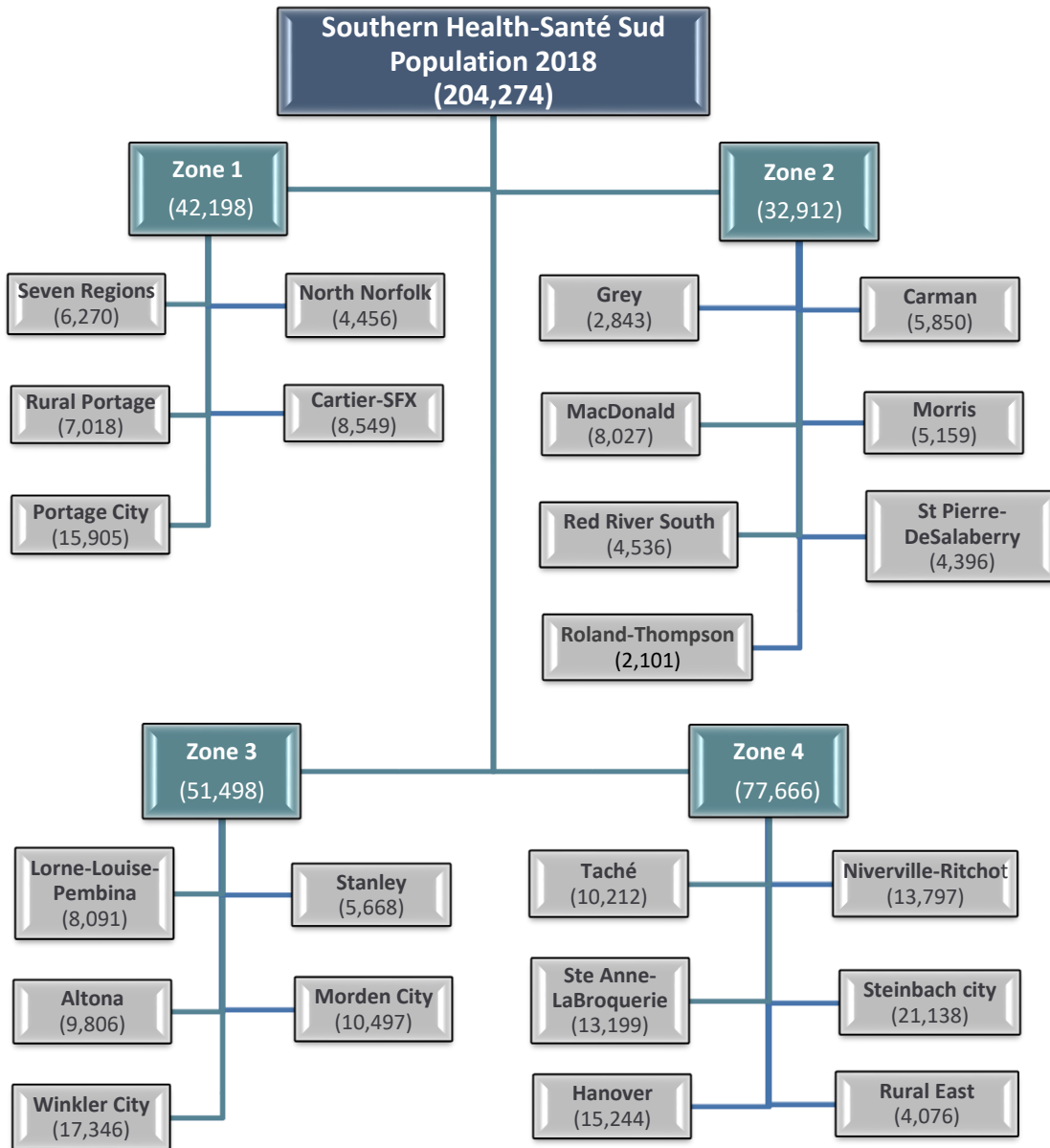
### Label Change to Population Report

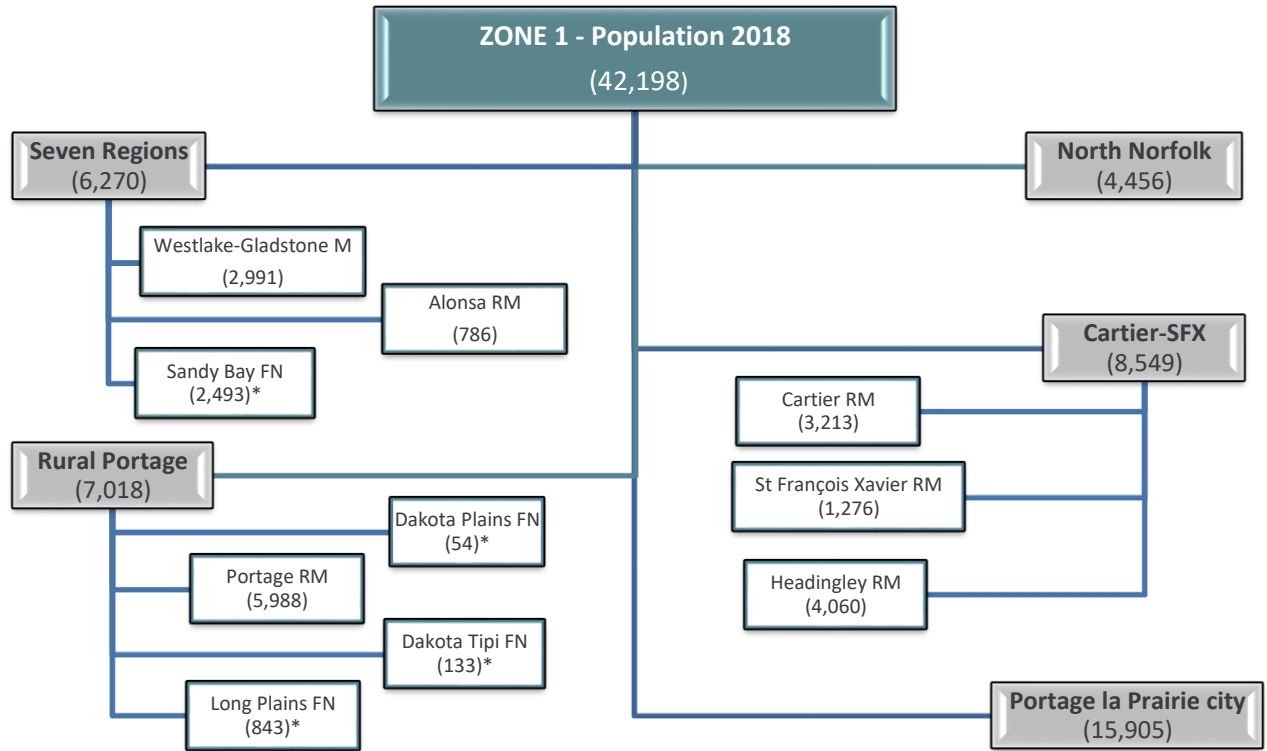
The population report is organized by four smaller geographies within Southern Health-Santé Sud. In previous reports this was referred to as “areas”, however going forward this will be referred to as “zones”.

New Zone	Former Area
Zone 1	North Area
Zone 2	Mid Area
Zone 3	West Area
Zone 4	East Area



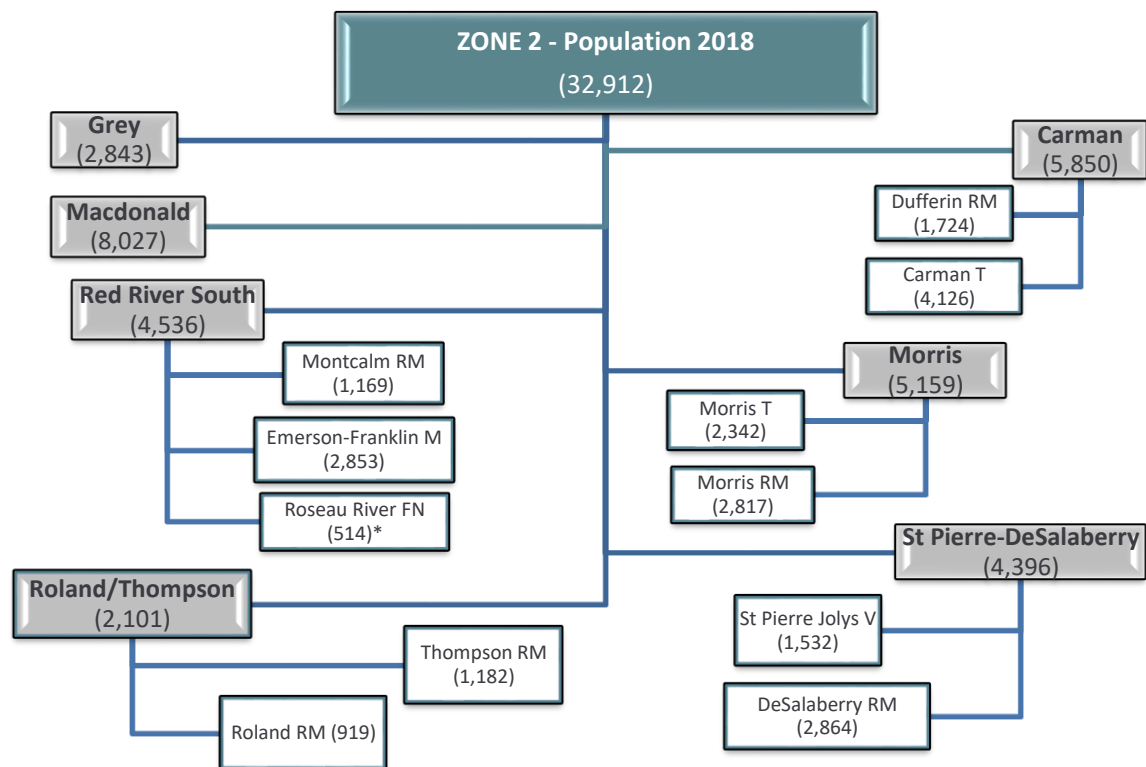
## 2018 POPULATION – Southern Health-Santé Sud





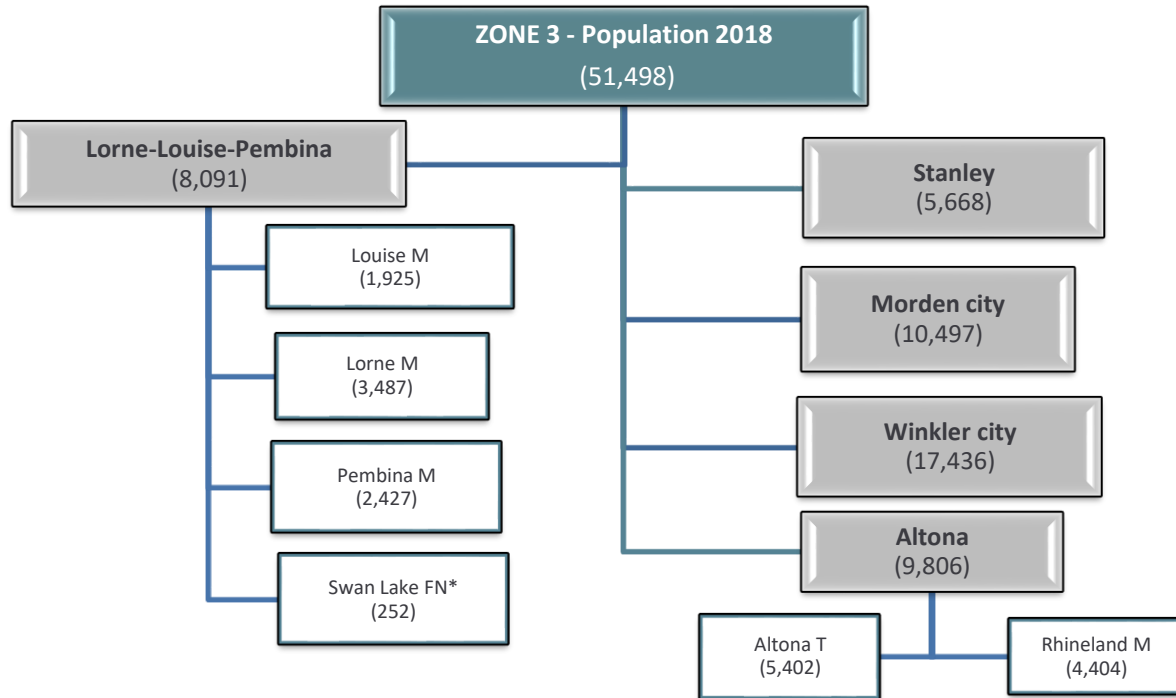
ZONE 1	2018	2017	Pop. Change	Percent Change
DISTRICT: Seven Regions	6,270	6,184	86	1.4%
Westlake-Gladstone Municipality	2,991	2,941	50	1.7%
Alonsa RM	786	756	30	4%
Sandy Bay Ojibway First Nations*	2,493	2,487	6	0.2%
DISTRICT: Rural Portage	7,018	7,084	-66	-0.9%
Dakota Tipi First Nation*	133	139	-6	-4.3%
Dakota Plains First Nation*	54	42	12	28.6%
Long Plain First Nation *	843	864	-21	-2.4%
Portage RM	5,988	6,039	-51	-0.8%
DISTRICT: North Norfolk Municipality	4,456	4,414	42	1%
DISTRICT: Cartier-SFX	8,549	8,127	422	5.2%
Cartier RM	3,213	3,214	-1	0%
St François Xavier RM	1,276	1,264	12	0.9%
Headingley RM	4,060	3,649	411	11.3%
DISTRICT: Portage la Prairie City	15,905	15,999	-94	-0.6%
<b>ZONE 1 SUBTOTAL</b>	<b>42,198</b>	<b>41,808</b>	<b>390</b>	<b>0.9%</b>

\*according to Manitoba Health, Seniors and Active Living, 2018 population registry file – see page 15 for Indigenous Population



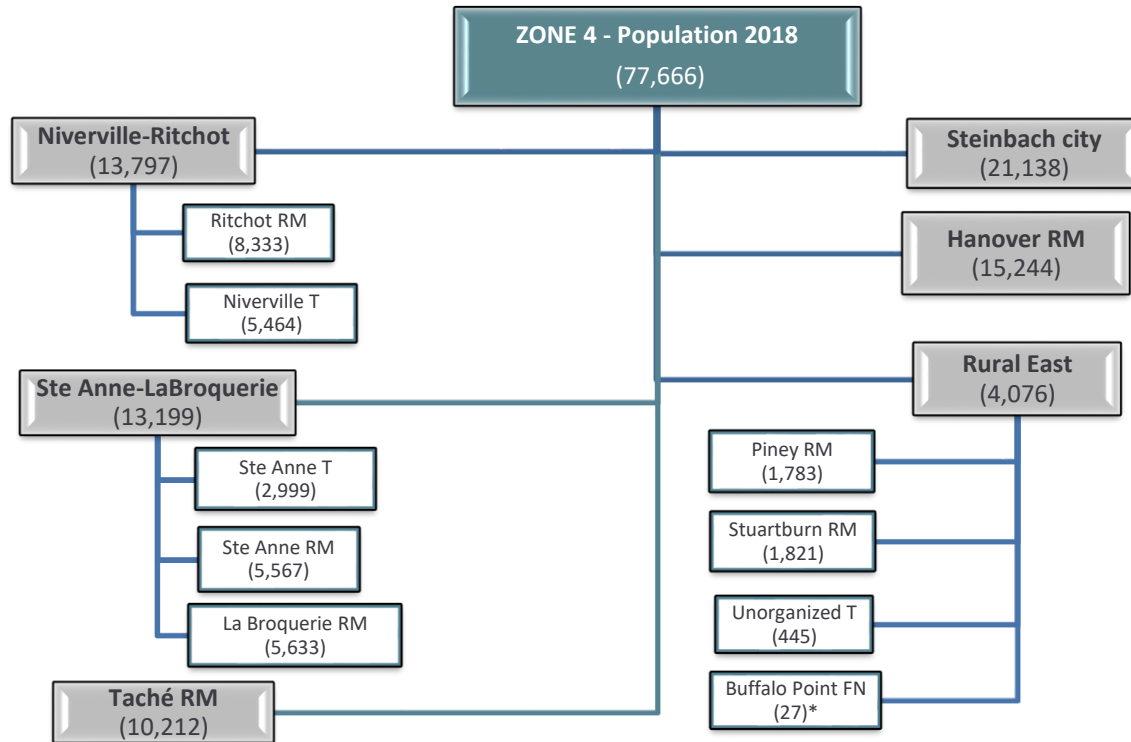
ZONE 2	2018	2017	Pop change	Percent change
District: Grey Municipality	2,843	2,846	-3	-0.1%
District: Macdonald RM	8,027	7,753	274	3.5%
District: Red River South	4,536	4,515	21	0.5%
Emerson-Franklin Municipality	2,853	2,817	36	1.3%
Montcalm RM	1,169	1,175	-6	-0.5%
Roseau River Anishinabe FN*	514	523	-9	-1.7%
District: Roland/Thompson	2,101	2,083	18	0.9%
Roland RM	919	934	-15	-1.6%
Thompson RM	1,182	1,149	33	2.9%
District: Carman	5,850	5,832	18	0.3%
Carman T	4,126	4,089	37	0.9%
Dufferin RM	1,724	1,743	-19	-1.1%
District: Morris	5,159	5,128	31	0.6%
Morris RM	2,817	2,794	23	0.8%
Morris T	2,342	2,334	8	0.3%
District: St Pierre-DeSalaberry	4,396	4,375	21	0.5%
St Pierre Jolys V	1,532	1,470	62	4.2%
De Salaberry RM	2,864	2,905	-41	-1.4%
<b>ZONE 2 SUBTOTAL</b>	<b>32,912</b>	<b>32,532</b>	<b>380</b>	<b>1.2%</b>

\*according to Manitoba Health, Seniors and Active Living, 2018 population registry file – see page 15 for Indigenous Population



ZONE 3	2018	2017	Pop change	Percent change
District: Lorne/Louise/Pembina	8,091	8,058	33	0.4%
Lorne Municipality	3,487	3,496	-9	-0.3%
Louise Municipality	1,925	1,913	12	0.6%
Pembina Municipality	2,427	2,414	13	0.5%
Swan Lake FN*	252	235	17	7.2%
District: Altona	9,806	9,753	53	0.5%
Rhineland Municipality	4,404	4,415	-11	-0.2%
Altona T	5,402	5,338	64	1.2%
District: Stanley	5,668	5,719	-51	-0.9%
District: Morden City	10,497	10,191	306	3.0%
District: Winkler City	17,436	17,046	390	2.3%
<b>ZONE 3 SUBTOTAL</b>	<b>51,498</b>	<b>50,767</b>	<b>731</b>	<b>1.4%</b>

\*according to Manitoba Health, Seniors and Active Living, 2018 population registry file – see page 15 for Indigenous Population



ZONE 4	2018	2017	Pop change	Percent change
District: Niverville-Ritchot	13,797	13,164	633	4.8%
Niverville T	5,464	5,151	313	6.1%
Ritchot RM	8,333	8,013	320	4.0%
District: Ste. Anne-LaBroquerie	13,199	13,530	-331	-2.4%
Ste Anne T	2,999	2,834	165	5.8%
Ste Anne RM	4,567	5,224	-657	-12.6%
LaBroquerie RM	5,633	5,472	161	2.9%
District: Taché	10,212	9,424	788	8.4%
District: Steinbach City	21,138	21,000	138	0.7%
District: Hanover	15,244	14,727	517	3.5%
District: Rural East	4,076	4,073	3	0.1%
Piney RM	1,783	1,782	1	0.1%
Stuartburn RM	1,821	1,806	15	0.8%
Unorganized Territory	445	454	-9	-2.0%
Buffalo Point FN*	27	31	-4	-12.9%
<b>ZONE 4 SUBTOTAL</b>	<b>77,666</b>	<b>75,918</b>	<b>1,748</b>	<b>2.3%</b>

\*according to Manitoba Health, Seniors and Active Living, 2018 population registry file – see page 15 for Indigenous Population



## 10 YEAR POPULATION GROWTH (2008-2018)

As shown below, the 2018 population for the Southern Health-Santé Sud was **204,274** with an annual growth rate of 1.6%, and a ten-year growth rate of 20%. This translates to 3,249 more residents in the past year (2017 to 2018) and to 34,202 more residents in the past ten years (2008 to 2018).

Southern Health-Santé Sud Population	
2018	204,274
2017	201,025
2008	170,072

2008-2018  
20% Ten-Year Growth

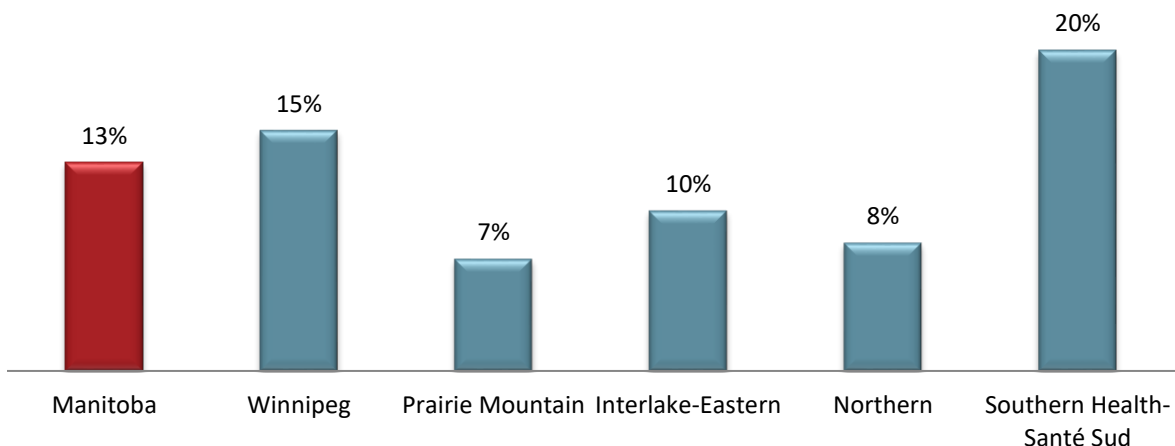
2017-2018  
1.6% Annual Growth

Source: Manitoba Health, Seniors and Active Living 2018 population registry files

### Manitoba RHA Comparisons

Southern Health-Santé Sud continues to have the fastest growing population in Manitoba. It has grown by 20% in the past decade which is the highest in the province. The Manitoba average growth rate for this time period was 13%.

Manitoba Regional Health Authorities Population Change 2008-2018.



Source: Manitoba Health, Seniors and Active Living, Population Report 2008 and 2018

Although Southern Health-Santé Sud has the highest percentage of growth, it does not have the highest volume of growth for the province. As shown below, Manitoba has grown over 160,000 residents over the past decade. Winnipeg, during this time period, represented over 98,000 new residents and contributed to 61% of the Manitoba growth. Nevertheless, Southern Health-Santé Sud’s contribution of 21%, was the largest volume growth among rural RHAs. This population growth pattern for regions across Manitoba has been fairly consistent over the years.

**Population Change among Manitoba Regional Health Authorities, 2008-2018.**

Regional Health Authority	Population 2018	Population 2008	Population Change	Contribution to Manitoba Growth
Winnipeg (WRHA – incl. Churchill)	778,239	679,488	98,751	61%
Prairie Mountain Health	170,899	159,929	10,970	7%
Interlake-Eastern	130,259	118,584	11,675	7%
Northern	76,847	70,908	5,939	4%
Southern Health-Santé Sud	204,274	170,072	34,202	21%
<b>Manitoba</b>	<b>1,360,518</b>	<b>1,198,981</b>	<b>161,537</b>	<b>100%</b>

Source: Manitoba Health, Seniors and Active Living, Population Report 2008 and 2018

# 2018

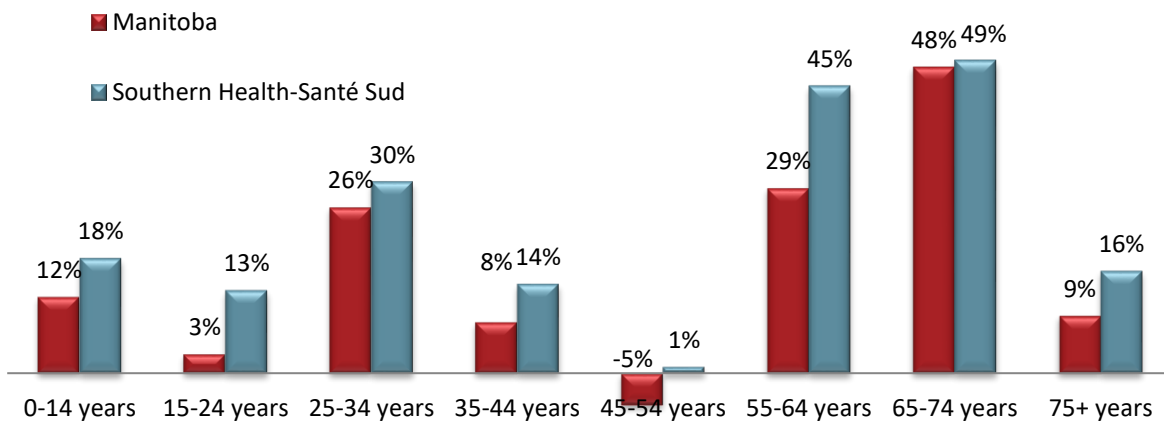
Loading



## AGE GROUP COMPARISONS

Southern Health-Santé Sud’s population continues to grow across almost all age groups. In particular, it is worth noting that while Manitoba has only grown by 12% in the youngest age group (0-14 years), the region has grown by 18% in the youngest age group (0-14 years). The graph also depicts an aging population with the fastest growing cohort between 55-74 years (“baby boomers”).

Population Change by Age Group, Manitoba and Southern Health-Santé Sud, 2008-2018.

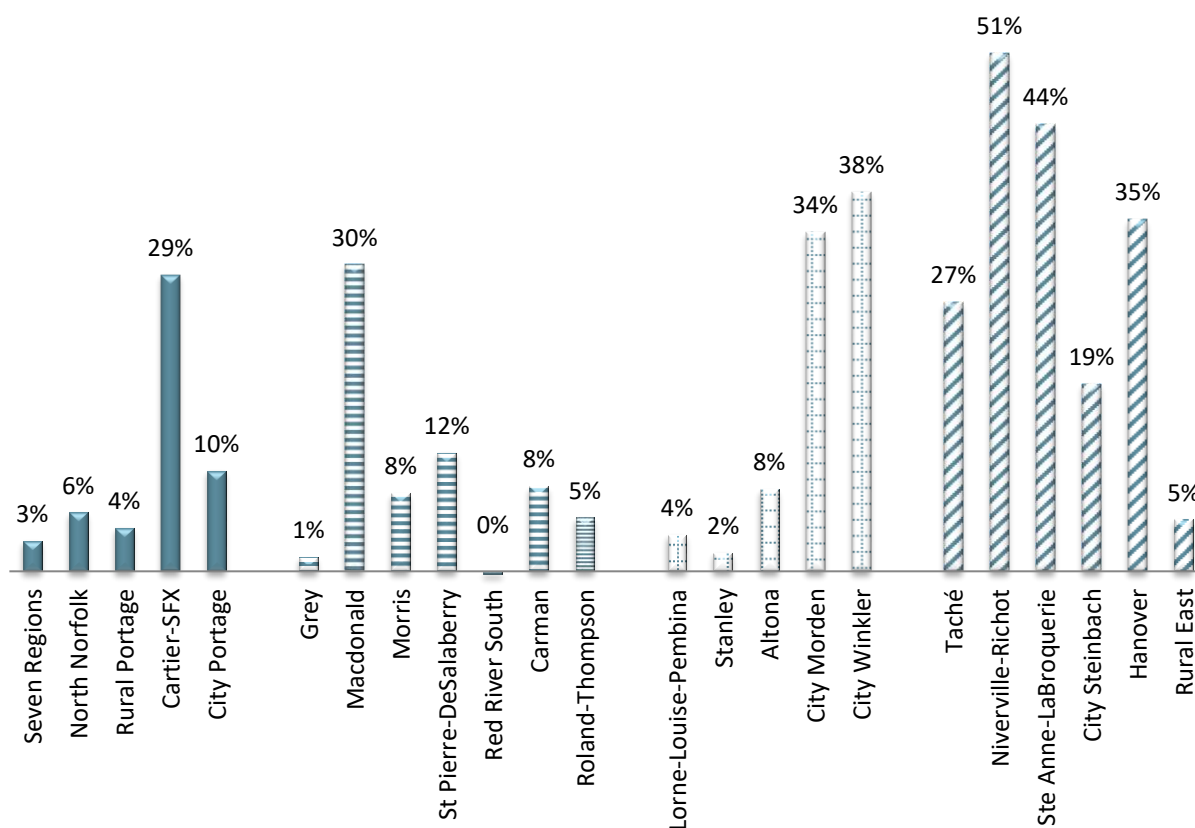


Source: Manitoba Health, Seniors and Active Living, Population Report 2008 and 2018

## DISTRICT AND MUNICIPAL POPULATION CHANGE

The figure below shows the population growth within the region by districts. The district of Niverville-Richot experienced the highest rate of growth at 51%. The general trend for population growth in Southern Health-Santé Sud is the highest around bedroom communities close to Winnipeg and the four cities within the region. The districts, which experienced a lot of population change (25 percent or more), included: Cartier-SFX, Macdonald, Morden city, Winkler city, Taché, Niverville-Ritchot, Ste Anne-LaBroquerie and Hanover. In contrast, the districts which experienced very little population change (5 percent or less) included: Seven Regions, Rural Portage, Grey, Red River South, Roland-Thompson, Lorne/Louise/Pembina, Stanley and Rural East.

Population Growth by Districts, Southern Health-Santé Sud, 2008-2018.



Source: Manitoba Health, Seniors and Active Living, Population Report 2008 and 2018

## Population Growth by Districts and Municipalities, 2008-2018

<b>Zone 1</b>	<b>Population 2018</b>	<b>Population 2008</b>	<b>Population change</b>	<b>Percent change</b>
District: Seven Regions	6,270	6,067	203	3.3%
Westlake-Gladstone Municipality	2,991	2,971	20	0.7%
Alonsa RM	786	756	-13	-1.6%
Sandy Bay First Nations*	2,493	2,297	196	8.5%
District: North Norfolk Municipality	4,456	4,211	245	5.8%
District: Rural Portage	7,018	6,728	290	4.3%
Dakota Tipi First Nation*	133	125	8	6.4%
Dakota Plains First Nation*	54	37	17	45.9%
Long Plain First Nation *	843	738	105	14.2%
Portage RM	5,988	5,828	160	2.7%
District: Cartier-SFX	8,549	6,610	1,939	29.3%
Cartier RM	3,213	3,098	115	3.7%
St Francois Xavier RM	1,276	1,092	184	16.8%
Headingley RM	4,060	2,420	1,640	67.8%
District: Portage city	15,905	14,469	1,436	9.9%
<b>ZONE 1 SUBTOTAL</b>	<b>42,198</b>	<b>38,085</b>	<b>4,113</b>	<b>10.8%</b>

<b>Zone 2</b>	<b>Population 2018</b>	<b>Population 2008</b>	<b>Population change</b>	<b>Percent change</b>
District: Grey Municipality	2,843	2,804	39	1.4%
District: Macdonald	8,027	6,161	1,866	30.3%
District: Red River South	4,536	4,548	-12	-0.3%
Emerson-Franklin Municipality	2,853	2,769	84	3.0%
Montcalm RM	1,169	1,282	-113	-8.8%
Roseau River FN*	514	497	17	3.4%
District: Roland/Thompson	2,101	1,996	105	5.3%
Roland RM	919	890	29	3.3%
Thompson RM	1,182	1,106	76	6.9%
District: Carman	5,850	5,398	452	8.4%
Carman T	4,126	3,370	756	22.4%
Dufferin RM	1,724	2,028	-304	-15.0%
District: Morris	5,159	4,789	370	7.7%
Morris RM	2,817	2,790	27	1.0%
Morris T	2,342	1,999	343	17.2%
District: St Pierre-DeSalaberry	4,396	3,936	460	11.7%
St Pierre Jolys V	1,532	1,163	369	31.7%
De Salaberry RM	2,864	2,773	91	3.3%
<b>ZONE 2 SUBTOTAL</b>	<b>32,912</b>	<b>29,632</b>	<b>3,280</b>	<b>11.1%</b>

<b>Zone 3</b>	<b>Population 2018</b>	<b>Population 2008</b>	<b>Population change</b>	<b>Percent change</b>
District: Lorne/Louise/Pembina	8,091	7,807	284	3.6%
Lorne Municipality	9,487	3,282	205	6.2%
Louise Municipality	1,925	1,934	-9	-0.5%
Pembina Municipality	2,427	2,382	45	1.9%
Swan Lake FN*	252	209	43	20.6%
District: Altona	9,806	9,069	737	8.1%
Rhineland Municipality	4,404	4,663	-259	-5.6%
Altona T	5,402	4,406	996	22.6%
District: Stanley	5,668	5,570	98	1.8%
District: Morden City	10,497	7,861	2,636	33.5%
District: Winkler City	17,436	12,685	4,751	37.5%
<b>ZONE 3 SUBTOTAL</b>	<b>51,498</b>	<b>42,992</b>	<b>8,506</b>	<b>19.8%</b>

<b>Zone 4</b>	<b>Population 2018</b>	<b>Population 2008</b>	<b>Population change</b>	<b>Percent change</b>
District: Niverville/Ritchot	13,797	9,124	4,673	51.2%
Niverville T	5,464	3,151	2,313	73.4%
Ritchot RM	8,333	5,973	2,360	39.5%
District: Ste. Anne/LaBroquerie	13,199	9,156	4,043	44.2%
Ste Anne T	2,999	2,339	660	28.2%
Ste Anne RM	4,567	4,576	-9	-0.2%
LaBroquerie RM	5,633	2,241	3,392	151.4%
District: Taché	10,212	8,064	2,148	26.6%
District: Steinbach City	21,138	17,831	3,307	18.5%
District: Hanover	15,244	11,310	3,934	34.8%
District: Rural East	4,076	3,878	198	5.1%
Piney RM	1,783	1,743	40	2.3%
Stuartburn RM	1,821	1,701	120	7.1%
Unorganized Territories	445	433	12	2.8%
Buffalo Point FN*	27	1	26	2,600.0%
<b>ZONE 4 SUBTOTAL</b>	<b>77,666</b>	<b>59,363</b>	<b>18,303</b>	<b>30.8%</b>

## INDIGENOUS POPULATION

Getting estimates on the number of Indigenous residents is complicated because this is self-reported information – that is relying on a person self-identifying as **First Nation, Métis or Inuit**. The information that Manitoba Health, Seniors and Active Living tracks in the population registry is not considered representative of the Indigenous population in the province.

Within the region, concerted efforts have been made to address this data gap. Southern Health-Santé Sud's Indigenous Health Program keeps up to date records which has been gathered annually from First Nations and Métis Central Registries. In addition, the population numbers are cross-checked with the information derived from the Government of Canada – Indigenous Services Canada website.

There are seven First Nations communities and numerous Métis communities within Southern Health-Santé Sud. As of March 2019 there were 8,788 First Nations people living on-reserve and 7,527 First Nations people living off-reserve, over 11,000 Métis people, and a smaller number of Inuit people in the region. It is important to note that there are many Indigenous peoples currently residing in the region and utilizing our health care services that are not registered and are not represented in the numbers provided below.

There may be a number of reasons why an Indigenous person may not be registered; some are as follows:

1. They may not have applied for registration
2. They may have been denied in the registration process due to insufficient or incomplete documentation
3. They may have not been entitled to registration on the Indian Register pursuant to the *Indian Act*
4. They may be waiting for confirmation of their application

### Indigenous Population, Southern Health-Santé Sud, March 2019

First Nation Community	On-Reserve Population	Off-Reserve Population	Total Population
Buffalo Point FN	61	72	133
Dakota Plains FN	173	83	256
Dakota Tipi FN	208	221	429
Long Plain FN	2,456	2,090	4,546
Roseau River Anishinabe FN	1,223	1,473	2,696
Sandy Bay Ojibway FN	4,204	2,609	6,813
Swan Lake FN	463	979	1,442
<b>Total First Nation</b>	<b>8,788</b>	<b>7,527</b>	<b>16,315</b>
<b>Total Métis <sup>1</sup></b>			<b>(+) 11,065</b>
<b>Total Inuit</b>			<b>25</b>
<b>Total Indigenous (First Nation, Métis, Inuit)</b>			<b>27,405</b>

<sup>1</sup> Métis population based on March 2016

Source: Southern Health-Santé Sud, March 2019

