



Southern Health-Santé Sud
POPULATION 2016
STATISTICS

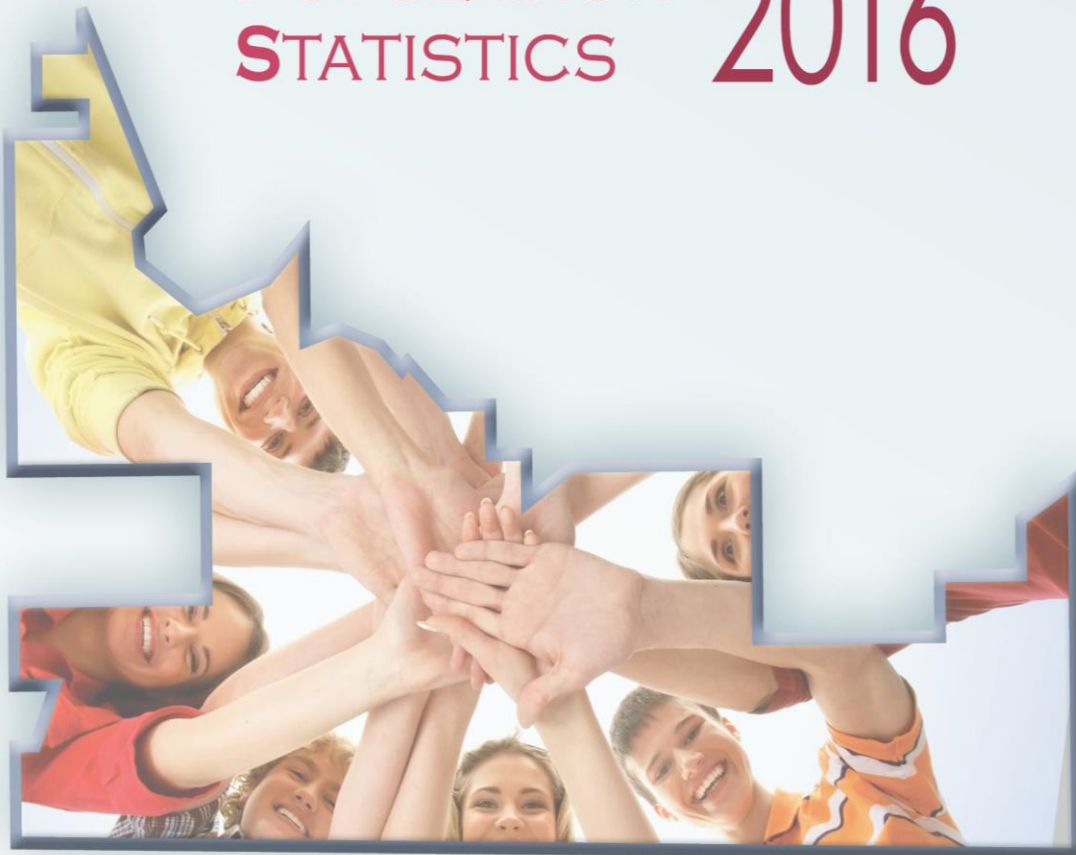


TABLE OF CONTENTS

BACKGROUND	3
MUNICIPAL AMALGAMATIONS FOR 2016	3
2016 POPULATION – SOUTHERN HEALTH-SANTÉ SUD	4
NORTH AREA	5
MID AREA	6
WEST AREA	7
EAST AREA	8
10 YEAR POPULATION GROWTH (2006-2016)	9
MANITOBA RHA COMPARISONS	9
AGE GROUP COMPARISONS	11
DISTRICT AND MUNICIPAL POPULATION CHANGE	12
INDIGENOUS POPULATION	15
MAP OF REGION	16



BACKGROUND

The population data shown in this report are based on records of residents registered with Manitoba Health as of June 1, 2016 and published by Manitoba Health, Seniors and Active Living (<http://www.gov.mb.ca/health/population/>). This population database is considered a reliable and accurate estimate of population sizes, and is helpful for understanding trends and useful for health planning purposes. The Indigenous population has also been updated in March 2017 by the Indigenous Health program with the great help of Band Membership clerks.



Southern Health-Santé Sud covers an area of 27,025 square kilometers in southern Manitoba. It stretches up from the 49th parallel and borders the United States of America to the south, and the Ontario border to the east. The region lies along the route of the Trans-Canada highway, and includes the south-west edge of Lake Manitoba down to the Pembina escarpment in the west.

Southern Health-Santé Sud is one of five regional health authorities (RHA) in Manitoba. The other four RHAs include: Northern Health Region, Interlake-Eastern RHA, Prairie Mountain Health, and WRHA (Winnipeg).

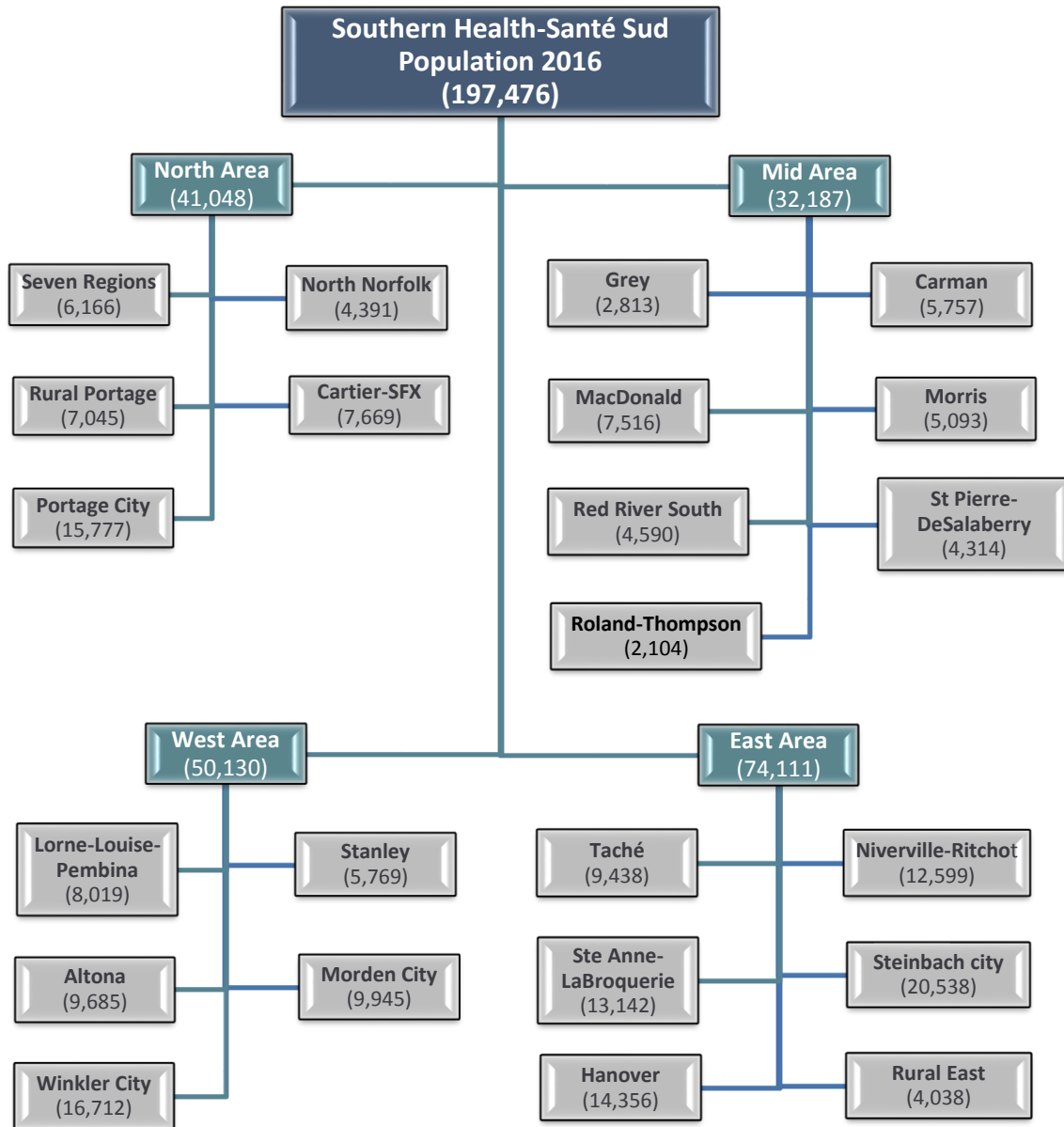
Municipal Amalgamations

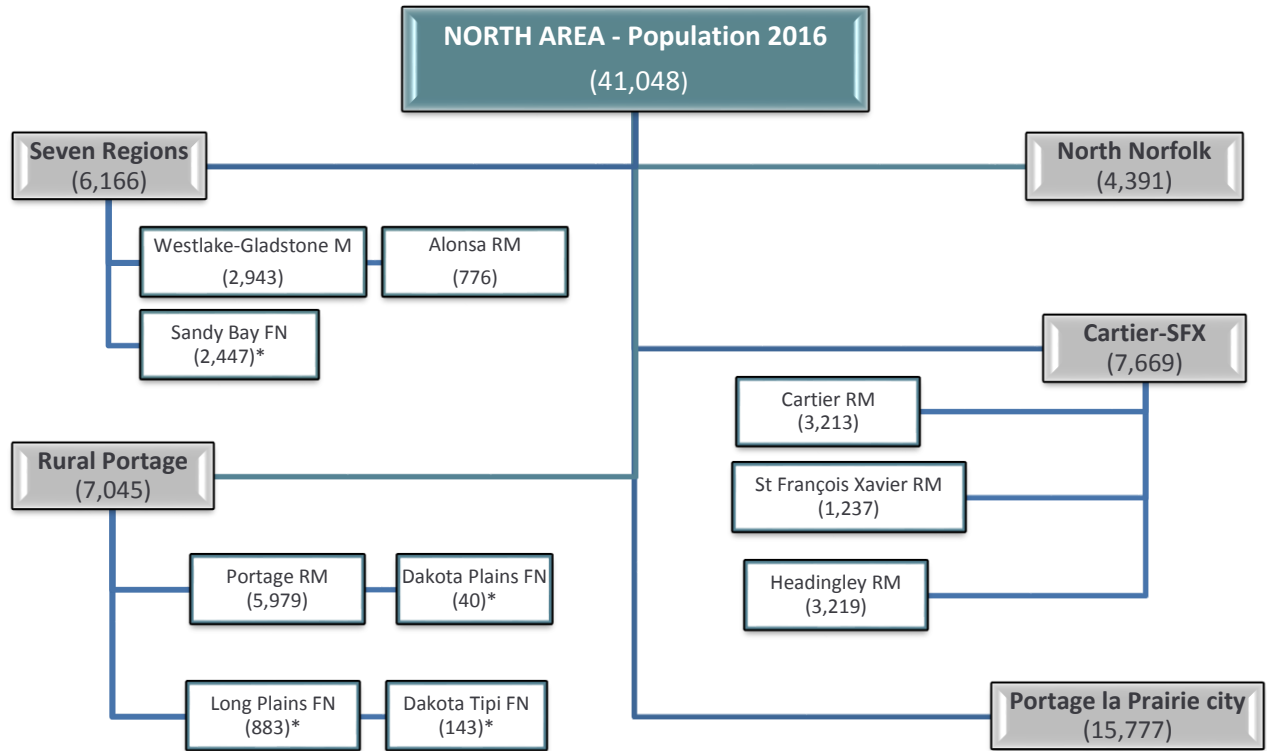
A series of municipal amalgamations came into effect as of January 1, 2015. A map of Southern Health-Santé Sud is on page 16. These newly defined municipalities affect the following areas:

New Municipality	Former Municipalities	District Name
Emerson-Franklin Municipality	Emerson T, Franklin RM	Emerson-Franklin
Grey Municipality	Grey RM, St Claude V**	Grey
Lorne Municipality	Lorne RM, Somerset V, Notre Dame des Lourdes V**	Lorne
Louise Municipality	Louise RM, Crystal City V, Pilot Mound T	Louise
North Norfolk Municipality	North Norfolk RM, MacGregor T	North Norfolk
Pembina Municipality	Pembina RM, Manitou T	Pembina
Rhineland Municipality	Rhineland RM, Plum Coulee T, Gretna T	Rhineland
Westlake-Gladstone Municipality	Lakeview RM, Westbourne RM, Gladstone T	Westlake-Gladstone
Morris Municipality	Morris T, Morris RM	Morris

****Please note that the district previously called “St Claude/Notre Dame de Lourdes” no longer exists. St Claude village is now part of the Grey RM population, and Notre Dame de Lourdes is part of the Lorne Municipality population.**

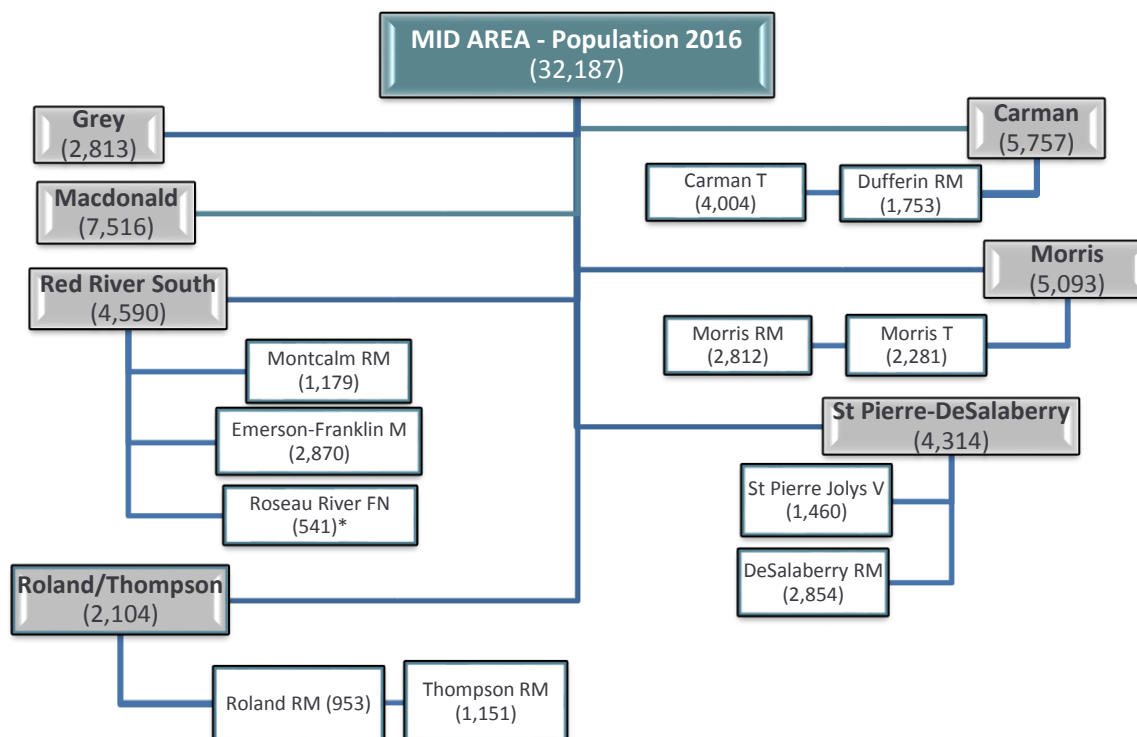
2016 POPULATION – Southern Health-Santé Sud





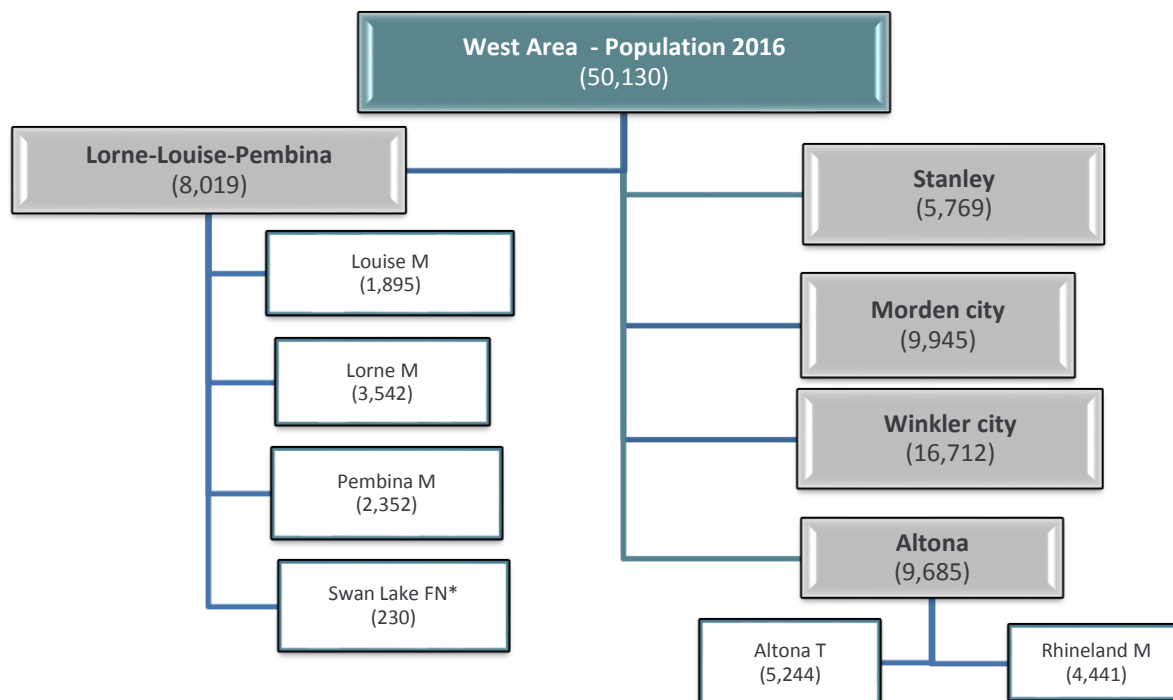
NORTH AREA	2016	2015	Pop. Change	Percent Change
DISTRICT: Seven Regions	6,166	6,173	-7	-0.1%
Westlake-Gladstone Municipality	2,943	2,904	39	1.3%
Alonsa RM	776	774	2	0.3%
Sandy Bay Ojibway First Nations*	2,447	2,495	-48	-1.9%
DISTRICT: Rural Portage	7,045	6,995	50	0.7%
Dakota Tipi First Nation*	143	131	12	9.2%
Dakota Plains First Nation*	40	35	5	14.3%
Long Plain First Nation *	883	885	-2	-0.2%
Portage RM	5,979	5,944	35	0.6%
DISTRICT: North Norfolk Municipality	4,391	4,381	10	0.2%
DISTRICT: Cartier-SFX	7,669	7,552	117	1.5%
Cartier RM	3,213	3,183	30	.9%
St François Xavier RM	1,237	1,225	12	1.0%
Headingley RM	3,219	3,144	75	2.4%
DISTRICT: Portage la Prairie City	15,777	15,538	239	1.5%
NORTH AREA	41,048	40,639	409	1.0%

*according to Manitoba Health, Seniors and Active Living, 2016 population registry file – see page 15 for Indigenous Population



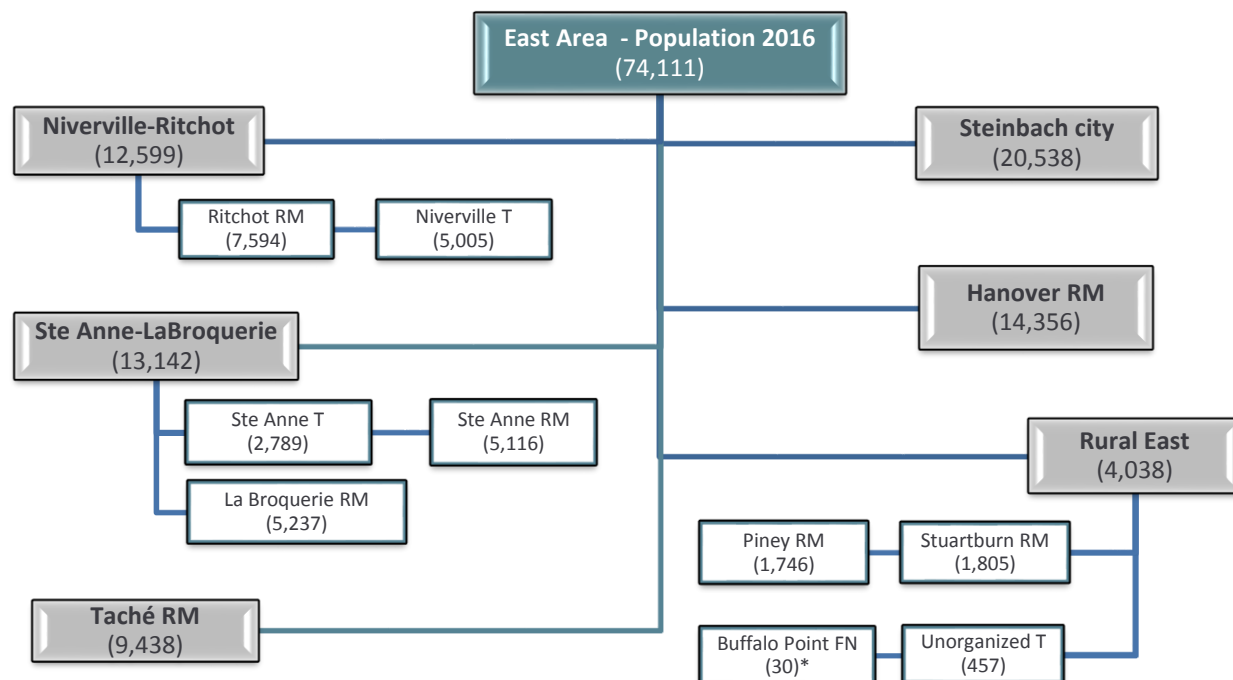
MID AREA	2016	2015	Pop change	Percent change
District: Grey Municipality	2,813	2,790	23	0.8%
District: Macdonald RM	7,516	7,342	174	2.4%
District: Red River South	4,590	4,662	-72	-1.5%
Emerson-Franklin Municipality	2,870	2,895	-25	-0.9%
Montcalm RM	1,179	1,190	-11	-0.9%
Roseau River Anishinabe FN*	541	577	-36	-6.2%
District: Roland/Thompson	2,104	2,089	15	0.7%
Roland RM	953	928	25	2.7%
Thompson RM	1,151	1,161	-10	-0.9%
District: Carman	5,757	5,744	13	0.2%
Carman T	4,004	3,941	63	1.6%
Dufferin RM	1,753	1,803	-50	-2.8%
District: Morris	5,093	5,068	25	0.5%
Morris RM	2,812	2,802	10	0.4%
Morris T	2,281	2,266	15	0.7%
District: St Pierre-DeSalaberry	4,314	4,266	48	1.1%
St Pierre Jolys V	1,460	1,422	38	2.7%
De Salaberry RM	2,854	2,844	10	0.4%
MID AREA SUBTOTAL	32,187	31,961	226	0.7%

*according to Manitoba Health, Seniors and Active Living, 2016 population registry file – see page 15 for Indigenous Population



WEST AREA	2016	2015	Pop change	Percent change
District: Lorne/Louise/Pembina	8,019	8,015	4	0.0%
Lorne Municipality	3,542	3,514	28	0.8%
Louise Municipality	1,895	1,903	-8	-0.4%
Pembina Municipality	2,352	2,364	-12	-0.5%
Swan Lake FN*	230	234	-4	-1.7%
District: Altona	9,685	9,513	172	1.8%
Rhineland Municipality	4,441	4,402	39	0.9%
Altona T	5,244	5,111	133	2.6%
District: Stanley	5,769	5,850	-81	-1.4%
District: Morden City	9,945	9,644	301	3.1%
District: Winkler City	16,712	16,322	390	2.4%
WEST AREA SUBTOTAL	50,130	49,344	786	1.6%

*according to Manitoba Health, Seniors and Active Living, 2016 population registry file – see page 15 for Indigenous Population



EAST AREA	2016	2015	Pop change	Percent change
District: Niverville-Ritchot	12,599	12,141	458	3.8%
Niverville T	5,005	4,903	102	2.1%
Ritchot RM	7,594	7,238	356	4.9%
District: Ste. Anne-LaBroquerie	13,142	12,565	577	4.6%
Ste Anne T	2,789	2,658	131	4.9%
Ste Anne RM	5,116	5,001	115	2.3%
LaBroquerie RM	5,237	4,906	331	6.7%
District: Taché	9,438	9,468	-30	-0.3%
District: Steinbach City	20,538	20,252	286	1.4%
District: Hanover	14,356	13,863	493	3.6%
District: Rural East	4,038	4,024	14	0.3%
Piney RM	1,746	1,757	-11	-0.6%
Stuartburn RM	1,805	1,777	28	1.6%
Unorganized Territory	457	459	-2	-0.4%
Buffalo Point FN*	30	31	-1	-3.2%
EAST AREA SUBTOTAL	74,111	72,313	1,798	2.5%

*according to Manitoba Health, Seniors and Active Living, 2016 population registry file – see page 15 for Indigenous Population

10 YEAR POPULATION GROWTH (2006-2016)

As shown below, the 2016 population for the Southern Health-Santé Sud was **197,476** with an annual growth rate of 1.7%, and a ten-year growth rate of 21%. This translates to 3,219 more residents in the past year (2015 to 2016) and to 34,387 more residents in the past ten years (2006-2016).

Southern Health-Santé Sud Population	
2016	197,476
2015	194,257
2006	163,089

2006-2016
21.1% Ten-Year Growth

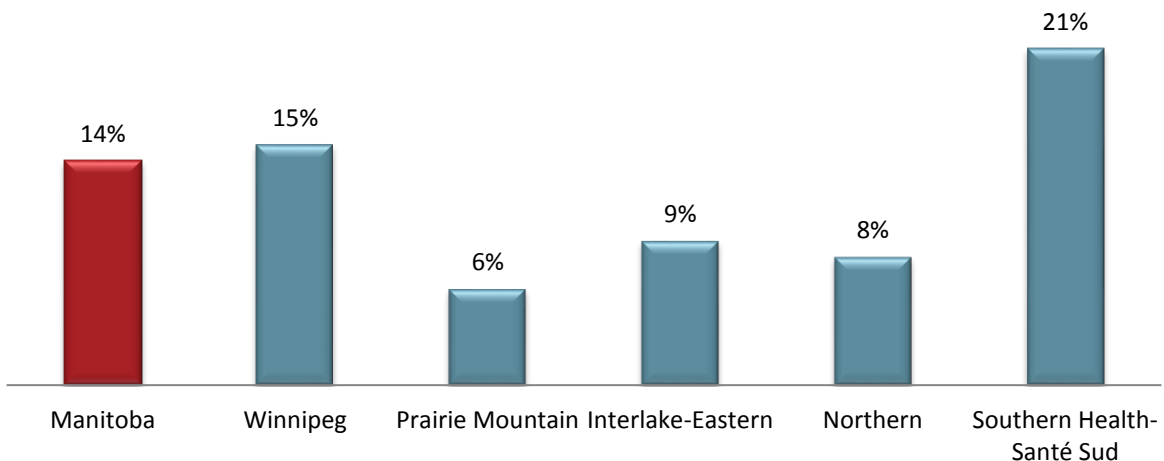
2015-2016
1.7% Annual Growth

Source: Manitoba Health, Seniors and Active Living, population registry files

Manitoba RHA Comparisons

Southern Health-Santé Sud continues to have the fastest growing population in Manitoba. It has grown by 21% in the past decade which is the highest in the province. The Manitoba average growth rate for this time period was 14%.

Manitoba Regional Health Authorities Population Change 2006-2016.



Source: Manitoba Health, Seniors and Active Living, Population Report 2006 and 2016

Although Southern Health-Santé Sud has the highest percentage of growth, it does not have the highest volume of growth for the province. As shown below, Manitoba has grown over 160,000 residents over the past decade. Winnipeg during this time period represented over 99,000 new residents and contributed to 62% of the Manitoba growth. Nevertheless, Southern Health-Santé Sud’s contribution of 21%, was the largest volume growth among rural RHAs.

Population Change among Manitoba Regional Health Authorities, 2006-2016.

Regional Health Authority	Population 2006	Population 2016	Population Change	Contribution to Manitoba Growth
Winnipeg (WRHA – incl. Churchill)	667,969	767,543	99,574	62%
Prairie Mountain Health	159,850	169,760	9,910	6%
Interlake-Eastern	117,046	128,105	11,059	7%
Northern	70,503	76,424	5,921	4%
Southern Health-Santé Sud	163,089	197,476	34,387	21%
Manitoba	1,178,457	1,339,308	160,851	100%

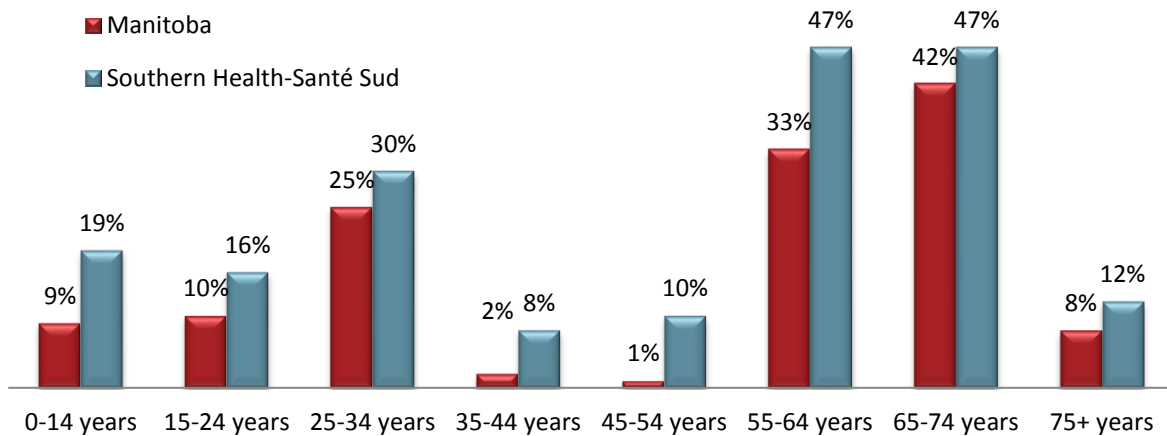
Source: Manitoba Health, Seniors and Active Living, Population Report 2006 and 2016



AGE GROUP COMPARISONS

Southern Health-Santé Sud's population is growing across all age groups. In particular, it is worth noting that while Manitoba has only grown by 9% in the youngest age group (0-14 years), the region has grown by 19%. The graph also depicts an aging population with the fastest growing cohort between 55-74 years ("baby boomers").

Population Change by Age Group, Manitoba and Southern Health-Santé Sud, 2006-2016.

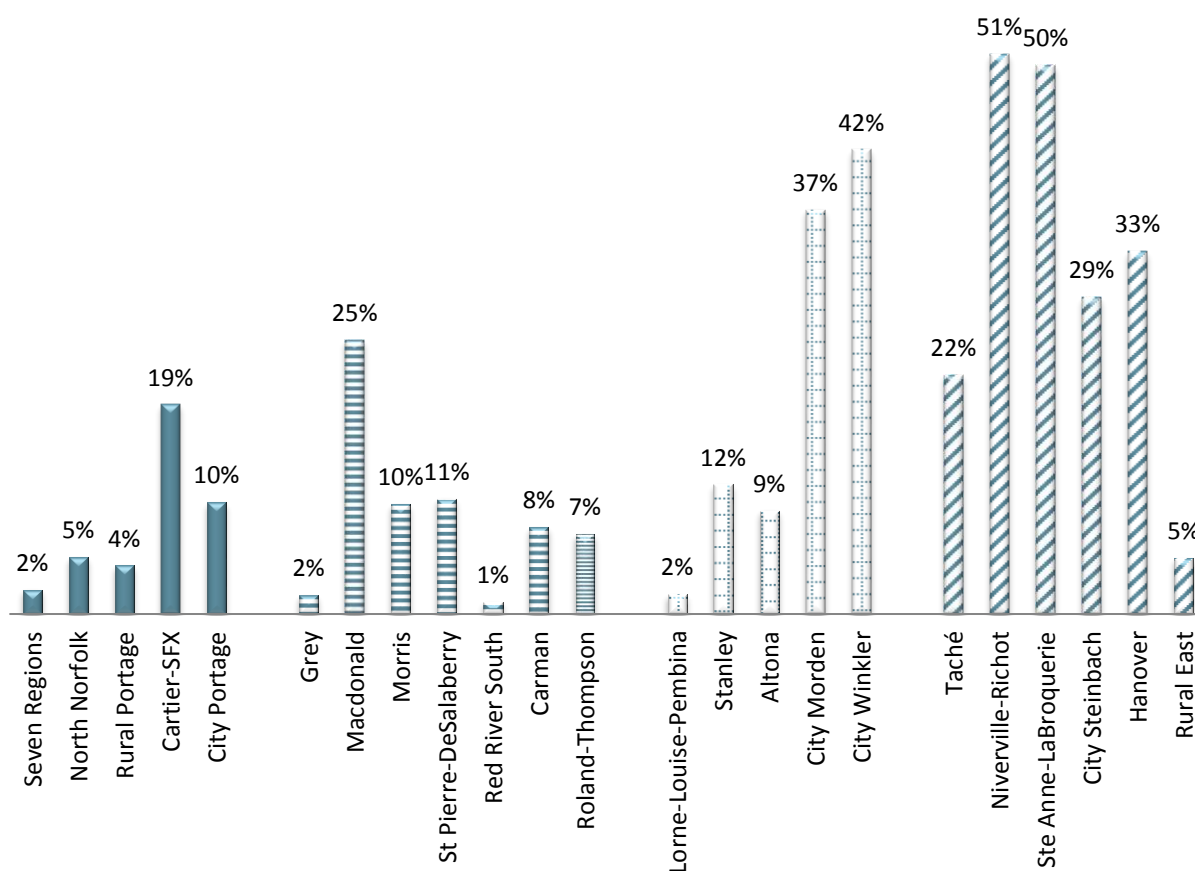


Source: Manitoba Health, Seniors and Active Living, Population Report 2006 and 2016

DISTRICT AND MUNICIPAL POPULATION CHANGE

The figure below shows the population growth within the region by districts. The district of Niverville-Ritchot experienced the highest rate of growth at 51%. The general trend for population growth in Southern Health-Santé Sud is the highest around bedroom communities close to Winnipeg and the four cities within the region. The districts which experienced a lot of population change (25 percent or more) included: Macdonald, Morden city, Winkler city, Niverville-Ritchot, Ste Anne-LaBroquerie, Steinbach city and Hanover. In contrast, the districts which experienced very little population change (5 percent or less) included: Seven Regions, North Norfolk, Rural Portage, Grey, Red River South, Lorne/Louise/Pembina, and Rural East.

Population Growth by Districts, Southern Health-Santé Sud, 2006-2016.



Source: Manitoba Health, Population Report 2006 and 2016

Districts and Municipalities	Population 2016	Population 2006	Population change	Percent change
District: Seven Regions	6,166	6,033	133	2.2%
Westlake-Gladstone Municipality	2,943	3,022	-79	-2.6%
Alonsa RM	776	783	-7	-0.9%
Sandy Bay First Nations*	2,447	2,228	219	9.8%
District: North Norfolk Municipality	4,391	4,172	219	5.2%
District: Rural Portage	7,045	6,745	300	4.4%
Dakota Tipi First Nation*	143	108	35	32.4%
Dakota Plains First Nation*	40	35	-5	-11.1%
Long Plain First Nation *	883	629	254	40.4%
Portage RM	5,979	5,963	16	0.3%
District: Cartier-SFX	7,669	6,441	1,228	19.1%
Cartier RM	3,213	3,070	143	4.7%
St Francois Xavier RM	1,237	1,036	201	19.4%
Headingley RM	3,219	2,335	884	37.9%
District: Portage city	15,777	14,322	1,455	10.2%
NORTH AREA SUBTOTAL	41,048	37,713	3,335	8.8%

Districts and Municipalities	Population 2016	Population 2006	Population change	Percent change
District: Grey Municipality	2,813	2,767	46	1.7%
District: Macdonald	7,516	5,948	1,568	26.4%
District: Red River South	4,590	4,539	51	1.1%
Emerson-Franklin Municipality	2,870	2,758	112	4.1%
Montcalm RM	1,179	1,291	-112	-8.7%
Roseau River FN*	541	490	51	10.4%
District: Roland/Thompson	2,104	1,961	143	7.3%
Roland RM	953	885	37	7.7%
Thompson RM	1,151	1,076	75	7.0%
District: Carman	5,757	5,335	422	7.9%
Carman T	4,004	3,263	741	22.7%
Dufferin RM	1,753	2,072	-319	-15.4%
District: Morris	5,093	4,630	463	10.0%
Morris RM	2,812	2,786	26	0.9%
Morris T	2,281	1,844	437	23.7%
District: St Pierre-DeSalaberry	4,314	3,903	411	10.5%
St Pierre Jolys V	1,460	1,121	339	30.2%
De Salaberry RM	2,854	2,782	72	2.6%
MID AREA SUBTOTAL	32,187	29,083	3,104	10.7%

District and Municipalities	Population 2016	Population 2006	Population change	Percent change
District: Lorne/Louise/Pembina	8,019	7,878	141	1.8%
Lorne Municipality	3,542	3,249	293	9.0%
Louise Municipality	1,895	1,985	-90	-4.5%
Pembina Municipality	2,352	2,430	-78	-3.2%
Swan Lake FN*	230	214	16	7.5%
District: Altona	9,685	8,852	833	9.4%
Rhineland Municipality	4,441	4,637	-196	-4.2%
Altona T	5,244	4,215	1,029	24.4%
District: Stanley	5,769	5,162	607	11.8%
District: Morden City	9,945	7,265	2,680	36.9%
District: Winkler City	16,712	11,732	4,980	42.4%
WEST AREA SUBTOTAL	50,130	40,889	9,241	22.6%

District and Municipalities	Population 2016	Population 2006	Population change	Percent change
District: Niverville/Ritchot	12,599	8,337	4,262	51.1%
Niverville T	5,005	2,657	2,348	88.4%
Ritchot RM	7,594	5,680	1,914	33.7%
District: Ste. Anne/LaBroquerie	13,142	8,753	4,389	50.1%
Ste Anne T	2,789	2,401	288	16.2%
Ste Anne RM	5,116	4,347	769	17.7%
LaBroquerie RM	5,237	2,005	3,232	161.2%
District: Taché	9,438	7,746	1,692	21.8%
District: Steinbach City	20,538	15,936	4,602	28.9%
District: Hanover	14,356	10,789	3,567	33.1%
District: Rural East	4,038	3,843	195	5.1%
Piney RM	1,746	1,733	13	0.8%
Stuartburn RM	1,805	1,679	126	7.5%
Unorganized Territories	457	429	28	6.5%
Buffalo Point FN*	30	2	28	1400.0%
EAST AREA SUBTOTAL	74,111	55,404	18,707	33.8%

INDIGENOUS POPULATION

Getting estimates on the number of Indigenous residents is complicated because this is self-reported information – that is relying on a person self-identifying as **First Nation, Métis or Inuit**. The information that Manitoba Health, Seniors and Active Living tracks in the population registry is not considered representative of the Indigenous population in the province.

Within the region, concerted efforts have been made to address this data gap. Southern Health-Santé Sud's Indigenous Health program keeps up to date records which has been gathered annually from First Nations and Métis Central Registries. In addition, the population numbers are cross-referenced with the information derived from the Indigenous and Northern Affairs Canada website (www.aadnc-aandc.gc.ca) Community Profiles section.

There are seven First Nations communities and numerous Métis communities within Southern Health-Santé Sud. As of March 2017, there were 8,757 First Nations people living on-reserve and 7,133 First Nations people living off-reserve, over 11,000 Métis people, and a smaller number of Inuit people in the region. It is important to note that there are many Indigenous peoples currently residing in the region and utilizing our health care services that are not registered and are not represented in the numbers provided below.

There may be a number of reasons why an Indigenous person may not be registered; some are as follows:

1. They may not have applied for registration
2. They may have been denied in the registration process due to insufficient or incomplete documentation
3. They may have not been entitled to registration on the Indian Register pursuant to the *Indian Act*
4. They may be waiting for confirmation of their application

Indigenous Population, Southern Health-Santé Sud, March 2017.

First Nation Community	On-Reserve Population	Off-Reserve Population	Total Population
Buffalo Point FN	59	72	131
Dakota Plains FN	178	88	266
Dakota Tipi FN	200	203	403
Long Plain FN	2,319	2,071	4,390
Roseau River Anishinabe FN	1,196	1,426	2,622
Sandy Bay Ojibway FN	4,150	2,516	6,666
Swan Lake FN	655	757	1,412
Total First Nation	8,757	7,133	15,890
Total Métis ¹			(+) 11,065
Total Inuit			25
Total Indigenous (First Nation, Métis, Inuit)			26,980

¹ Métis population based on March 2016

Source: Southern Health-Santé Sud, March 2017

